

DP 356786

Memorandum of Easements - DP 356786			
Shown	Purpose	Servient Tenement	Dominant Tenement
E	Sewage	Lot 2	Lot 1
EH		Lot 206	Lot 205
DF		Lot 154	Lots 151 & 152
DH		Lot 311	Lots 151 & 152
DI		Lot 157	Lot 156
BO	Right of Way & Water	Lot 310	Lots 146 & 147
BP	Right of Way	Lot 311	Lots 152, 153 & 154
DH			
C	Water Supply	Lot 302	Lot 315
EK		Lot 302	Lot 315

Restrictive Covenant (Building Line Limitation) - DP 356786
Areas:
A, B, F, G, H, I, J, K, L, M, N, P, Q, R, S, T, U, V, W, X, Y, Z AA, AB AC, AD AE, AF, AG, AH, AK, AL, AM, AN AO, AP, AQ, AR AS, AT AU, AV, AW, AX, AY, AZ, BA, BB, BC, BD, BE, BF, BG, BH, BI, BJ, EO, EP, BT, BV, BX, BZ, CB, CD, CF, CH, CJ, CL, AI, AJ
Restrictive Covenant (Height Restriction) - DP 356786
Areas:
Over whole of lots 2,3,4,5,6,7,8,9,10,11,12,13,14,15,16,17,18,19,20 & 21

Amalgamation Conditions - DP 356786

That lot 310 DP 356786 be held as to two undivided one-half shares by the owners of lots 146 and 147 DP 356786 as tenants in common in the said shares and that individual certificates of title be issued in accordance therewith.

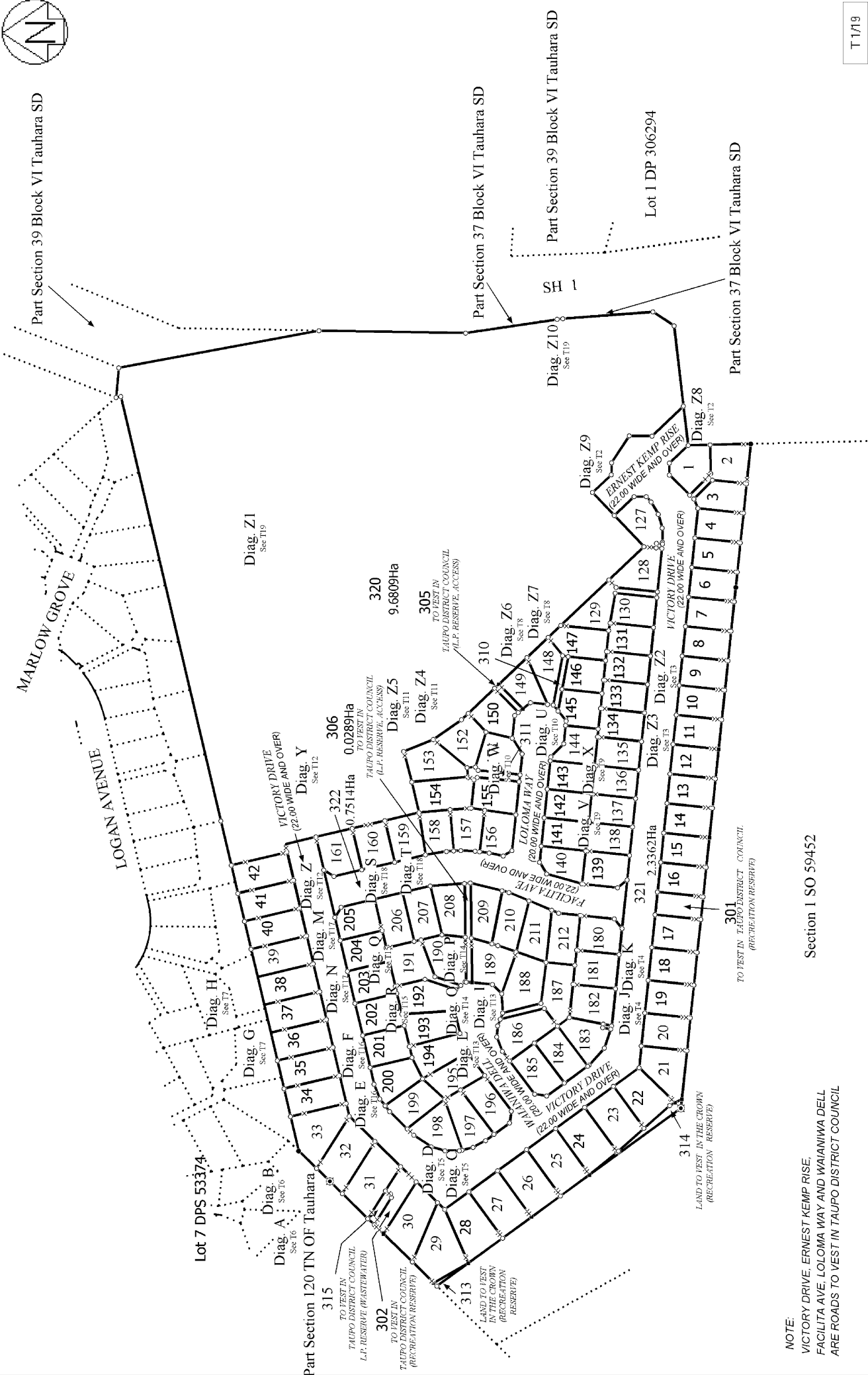
That lot 311 DP 356786 be held as to three undivided one-third shares by the owners of 152, 153 and 154 DP 356786 as tenants in common in the said shares and that individual certificates of title be issued in accordance therewith.

Memorandum of Easements In Gross - DP 356786			
Shown	Purpose	Servient Tenement	Grantee
B	Sewage	Lot 2	Taupo
G		Lot 3	
I		Lot 4	
K		Lot 5	
M		Lot 6	
P		Lot 7	
R		Lot 8	
T		Lot 9	
V		Lot 10	
X		Lot 11	
Z		Lot 12	
AB		Lot 13	
AD		Lot 14	
AF		Lot 15	
AH		Lot 16	
AJ		Lot 301	District
AL		Lot 17	
AN		Lot 18	
AP		Lot 19	
AR		Lot 20	
AT		Lot 21	
AV		Lot 22	
AX		Lot 23	
AZ		Lot 24	
BB		Lot 25	
BC		Lot 26	
BF		Lot 27	
BH		Lot 28	
BK		Lot 29	
BJ		Lot 29	
BL		Lot 30	
BN		Lot 302	Council
EN		Lot 302	
BQ		Lot 31	
BR		Lot 32	
BS		Lot 33	
BU		Lot 34	
BW		Lot 35	
BY		Lot 36	
CA		Lot 37	
CC		Lot 38	
CE		Lot 39	
CG		Lot 40	
CI		Lot 41	
CK		Lot 42	

N:\1050\014359.01\Memo of Easements In Gross

Memorandum of Easements in Gross - DP 356786			
Shown	Purpose	Servient Tenement	Grantee
CM	Sewage	Lot 128	Taupo
CN		Lot 129	
CO		Lot 131	
CP		Lot 132	
CQ		Lot 133	
CR		Lot 134	
CS		Lot 135	
CU		Lot 136	
CV		Lot 137	
CW		Lot 138	
CX		Lot 139	
CY		Lot 147	
CZ		Lot 148	
DA		Lot 149	
DB		Lot 305	
DC		Lot 150	District
DD		Lot 152	
DE		Lot 153	
DJ		Lot 157	
DK		Lot 158	
DL		Lot 159	
DM		Lot 160	
DN		Lot 160	
DO		Lot 161	
DQ		Lot 180	
DR		Lot 181	
DS		Lot 182	
DU		Lot 187	Council
DT		Lot 186	
DV		Lot 189	
DW		Lot 306	
DX		Lot 190	
DY		Lot 191	
DZ		Lot 192	
EA		Lot 193	
EC		Lot 194	
ED		Lot 195	
EE		Lot 196	
EF		Lot 197	
EG		Lot 198	
EI		Lot 320	
EJ		Lot 320	

Memorandum of Easements in Gross - DP 356786			
Shown	Purpose	Servient Tenement	Grantee
BO	Telecomms	Lot 310	Telecom NZ Ltd
BO	Gas	Lot 310	Natural Gas Corporation
BO	Electricity	Lot 310	WEL Networks Ltd
BP	Telecomms	Lot 311	Telecom NZ Ltd
BP	Gas	Lot 311	Natural Gas Corporation
BP	Electricity	Lot 311	WEL Networks Ltd
BP	Water Supply	Lot 311	Taupo District Council
DH	Telecomms	Lot 311	Telecom NZ Ltd
DH	Gas	Lot 311	Natural Gas Corporation
DH	Electricity	Lot 311	WEL Networks Ltd
DH	Water Supply	Lot 311	Taupo District Council
C	Sewage	Lot 302	
EK	Sewage, Stormwater	Lot 302	
EL	Stormwater	Lot 302	
EM	Sewage, Stormwater	Lot 302	
D	Water Supply, Sewage	Lot 302	
BM			
BN	Electricity	Lot 302	WEL Networks Ltd

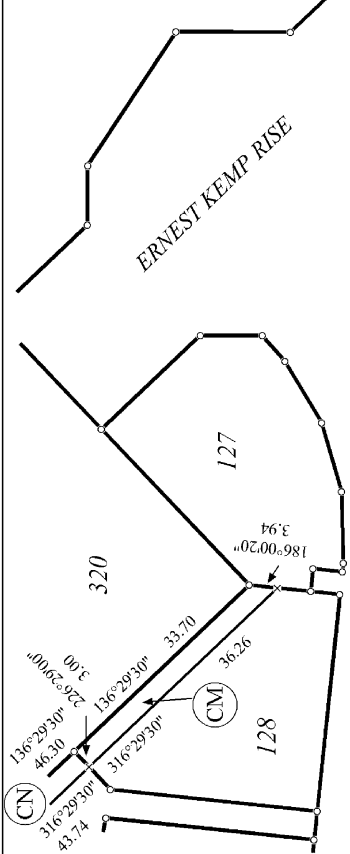
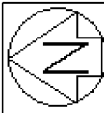


T 1/19

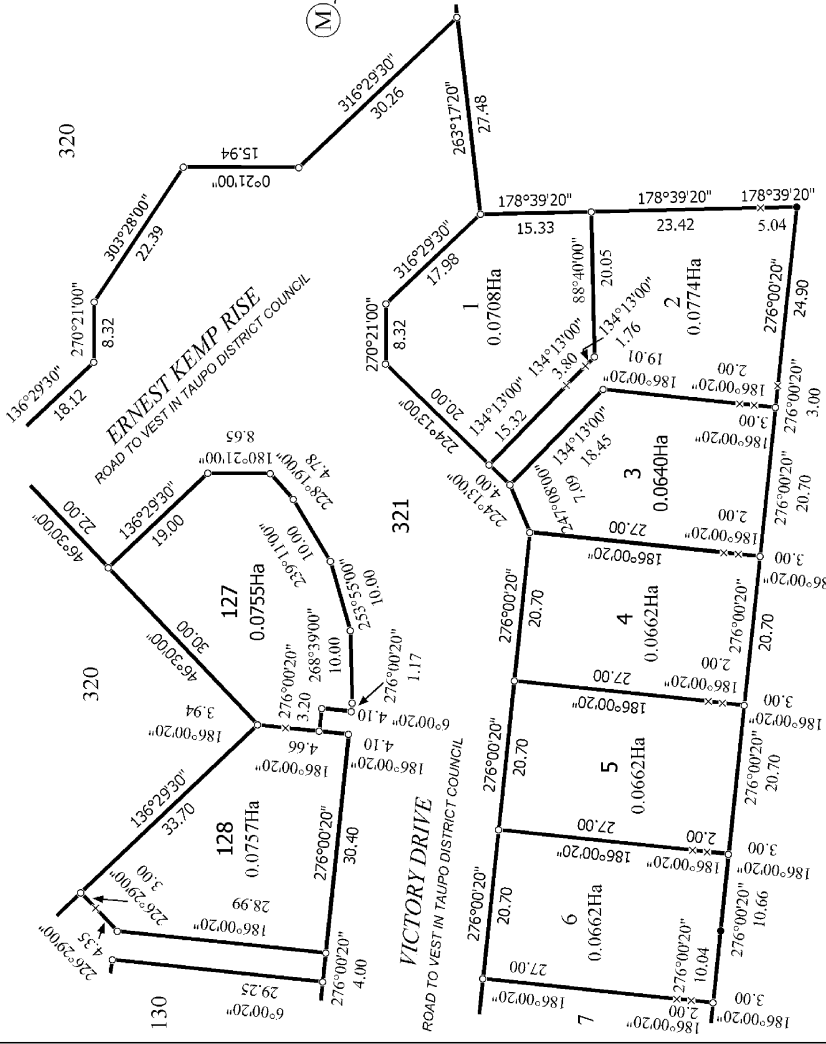
Land District South Auckland Digitally Generated Plan Generated on: 19/12/2005 09:39am Page 70 of 88	Lots 1-42, 127-161, 180-212, 301, 302, 305, 306, 310, 311, 313-315 & 320-322 being a Subdivision of Sec 1 SO 58791	Surveyor: Chadley Seth Keir Firm: Harrison Grierson Consultants Ltd (Te Survey Date: 19/07/2005	Digital Survey Plan LT 356786 Approved on: 19/12/2005
--	---	---	---

NOTE:
VICTORY DRIVE, ERNEST KEMP RISE,
FACILITA AVE, LOLOMA WAY AND WAIANUIWA DELL
ARE ROADS TO VEST IN TAUPU DISTRICT COUNCIL

Section 1 SO 59452



Diag. Z9



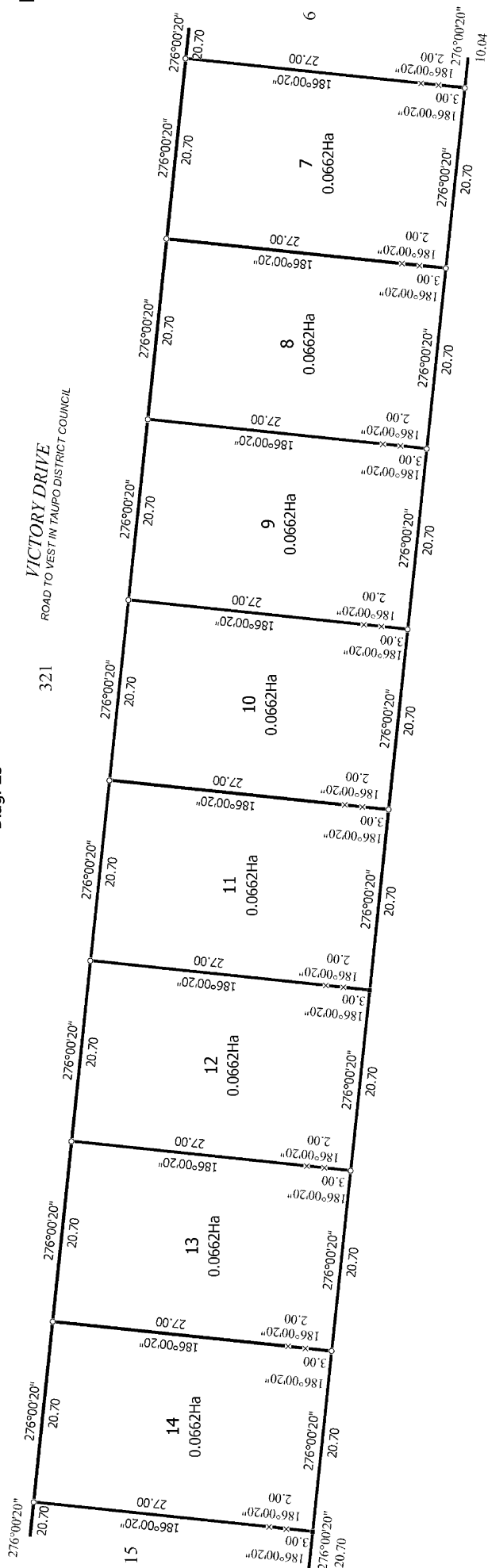
Diag. Z8
Non Primary

T 2/19

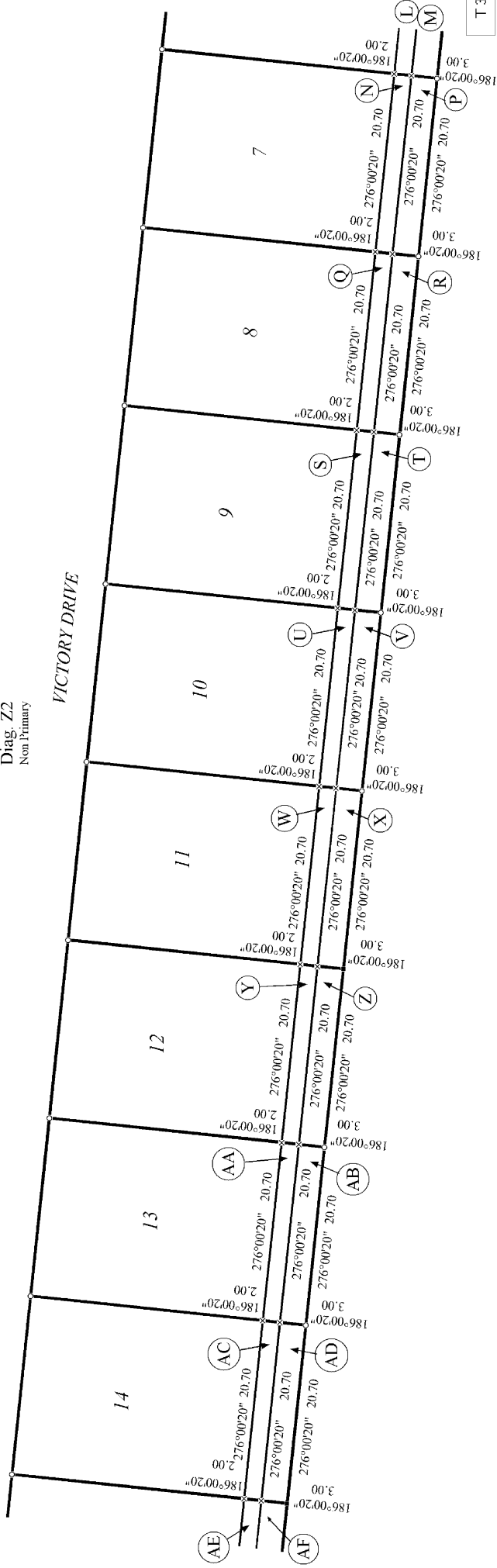
Land District South Auckland	Lots 1-42, 127-161, 180-212, 301, 302, 305, 306, 310, 311, 313-315 & 320-322 being a Subdivision of Sec 1 SO 58791	Surveyor: Chadley Seth Kair Firm: Harrison Grierson Consultants Ltd (Te Survey Date: 19/07/2005	Digital Survey Plan LT 356786 Approved on: 19/12/2005
Digitally Generated Plan Generated on: 19/12/2005 09:39am Page 71 of 88			



Diag. Z3



Diag. Z2
Non Primary

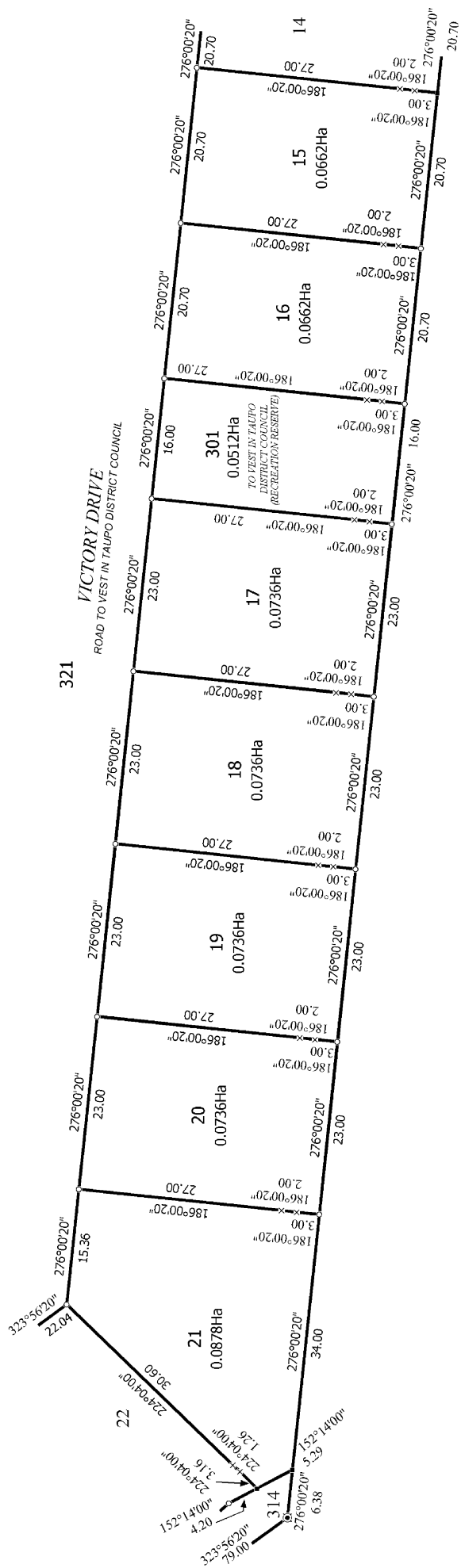


T 3/19

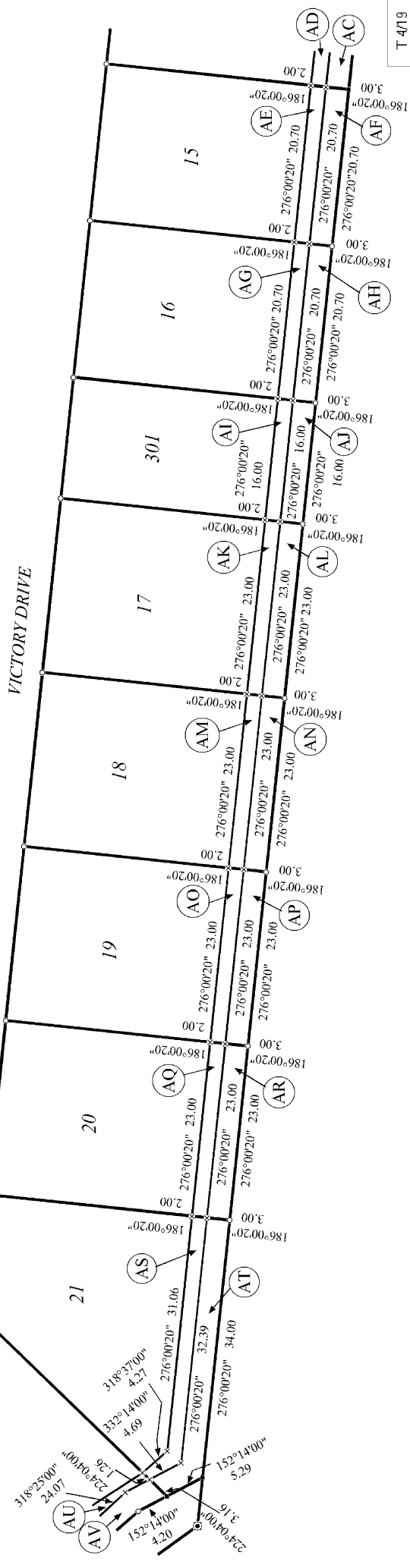
Land District South Auckland Digitally Generated Plan Generated on: 19/12/2005 09:39am Page 72 of 88	Lots 1-42, 127-161, 180-212, 301, 302, 305, 310, 311, 313-315 & 320-322 being a Subdivision of Sec 1 SO 58791	Surveyor: Chadley Seth Kair Firm: Harrison Gairson Consultants Ltd (Te Survey Date: 19/07/2005	Digital Survey Plan LT 356786 Approved on: 19/12/2005
--	--	--	---



Diag. J

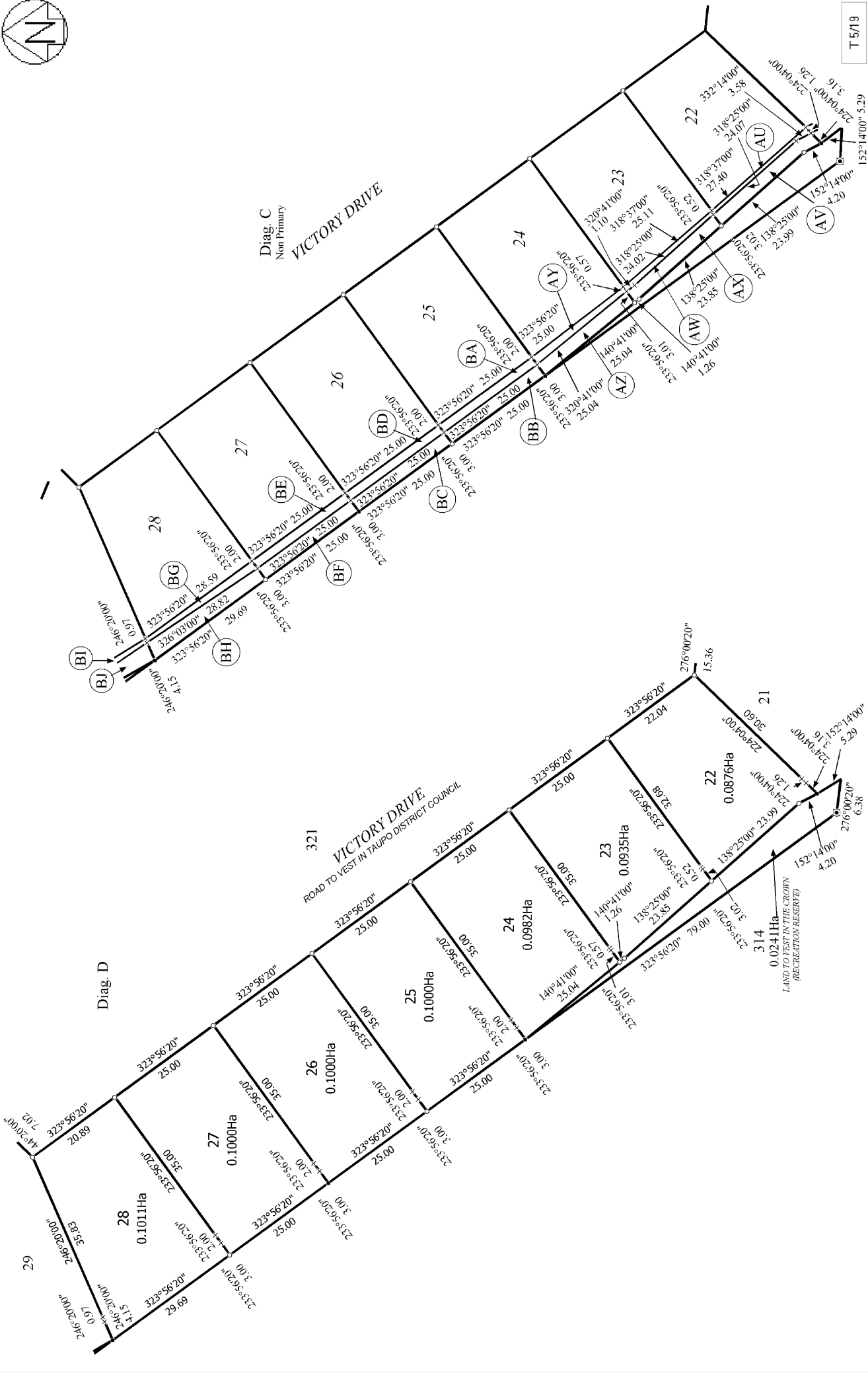


Diag. K
Non Primary



T 4719

Land District South Auckland	Lots 1-42, 127-161, 180-212, 301, 302, 305, 306, 310, 311, 313-315 & 320-322 being a Subdivision of Sec 1 SO 58791	Surveyor: Chadley Seth Keir Firm: Harrison Gimson Consultants Ltd (Te Survey Date: 19/07/2005	Digital Survey Plan LT 356786 Approved on: 19/12/2005
Digitally Generated Plan Generated on: 19/12/2005 09:39am Page 73 of 88			

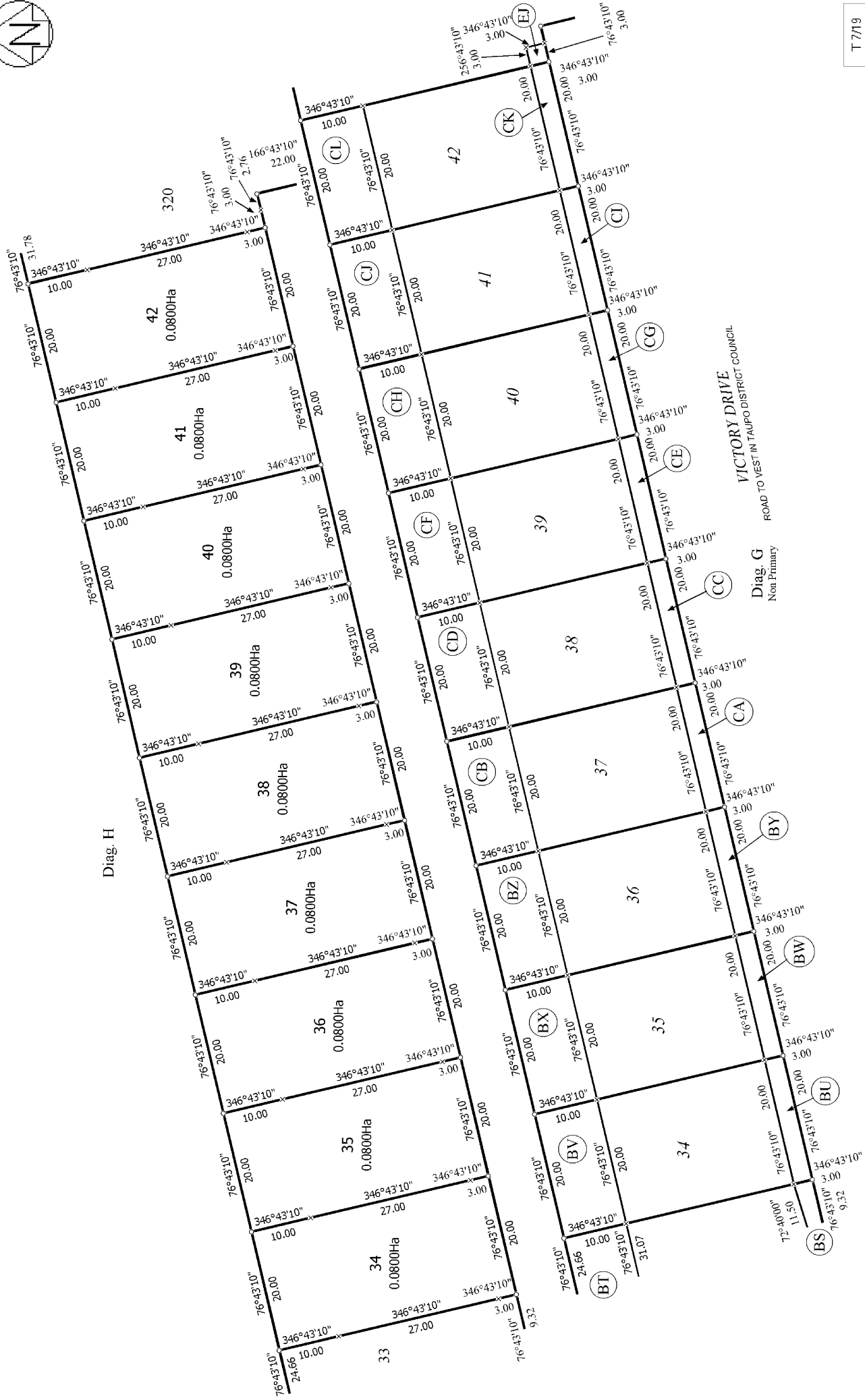


T 5/19

Land District South Auckland Digitally Generated Plan Generated on: 19/12/2005 09:39am Page 74 of 80	Lots 1-42, 127-161, 180-212, 301, 302, 305, 306, 310, 311, 313-315 & 320-322 being a Subdivision of Sec 1 SO 58791	Surveyor: Chadley Seth Kair Firm: Harrison Gairson Consultants Ltd (Te Survey Date: 19/07/2005	Digital Survey Plan LT 356786 Approved on: 19/12/2005
--	---	--	---



Diag. H



T 7/19

Land District South Auckland

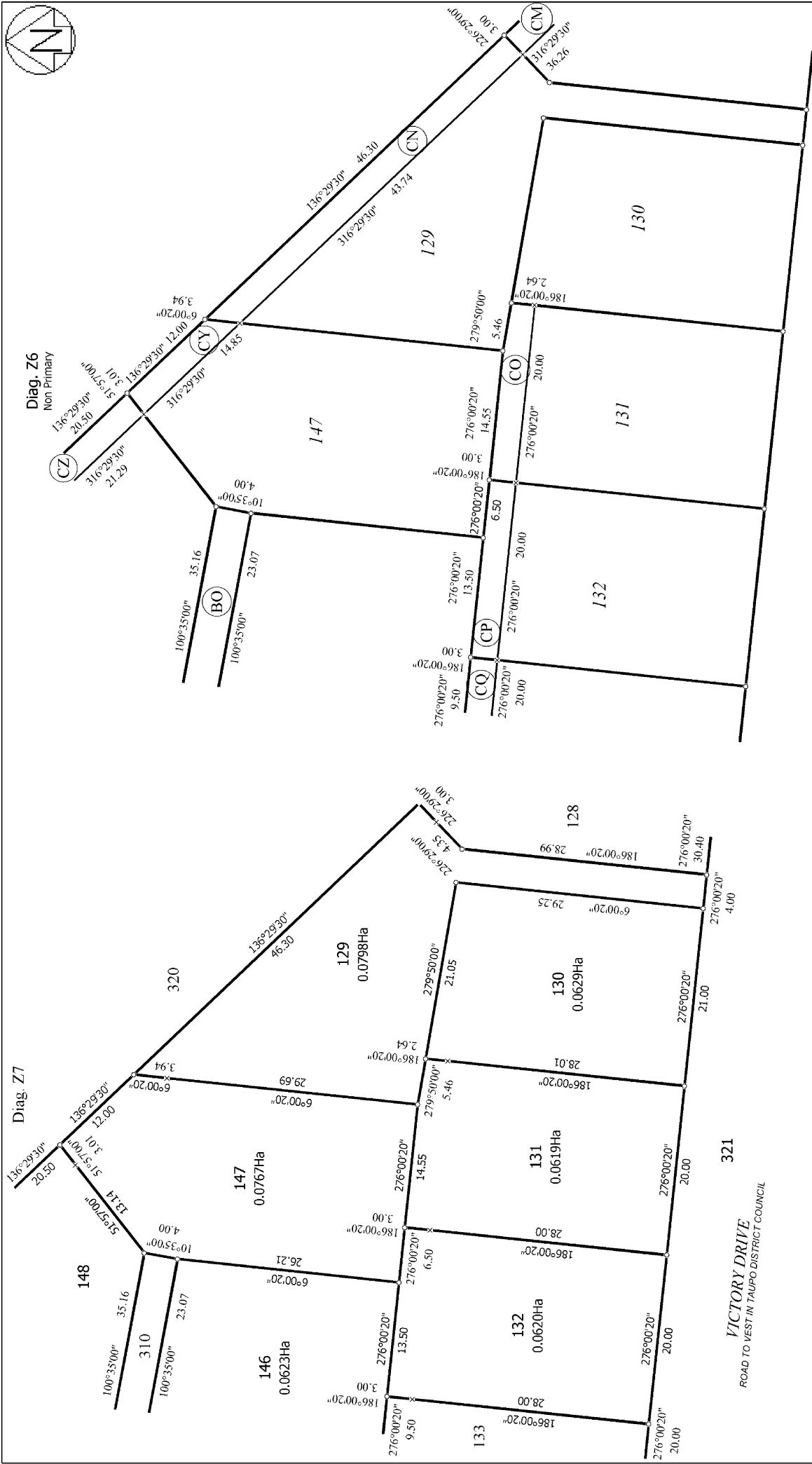
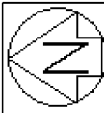
Digitally Generated Plan

Generated on: 19/12/2005 09:39am Page 76 of 88

Lots 1-42, 127-161, 180-212, 301, 302, 305, 306, 310, 311, 313-315 & 320-322
being a Subdivision of Sec 1 SO 58791

Surveyor: Chadley Seth Keir
Firm: Harrison Grierison Consultants Ltd (Te
Survey Date: 19/07/2005

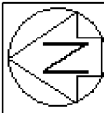
Digital Survey Plan
LT 356786
Approved on: 19/12/2005



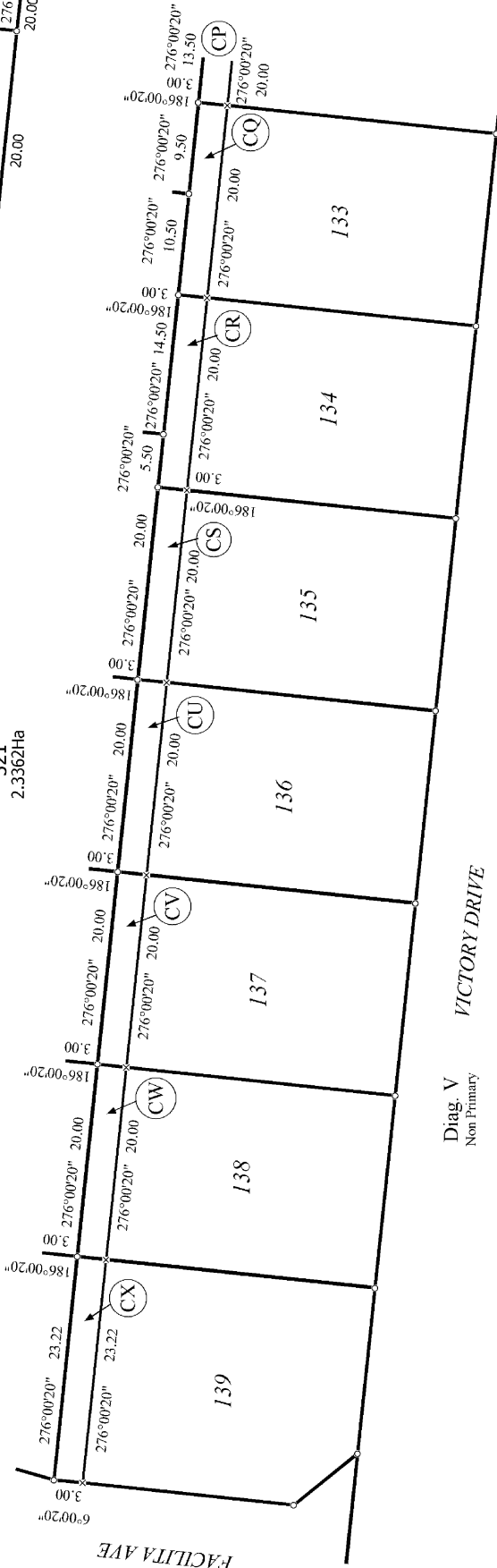
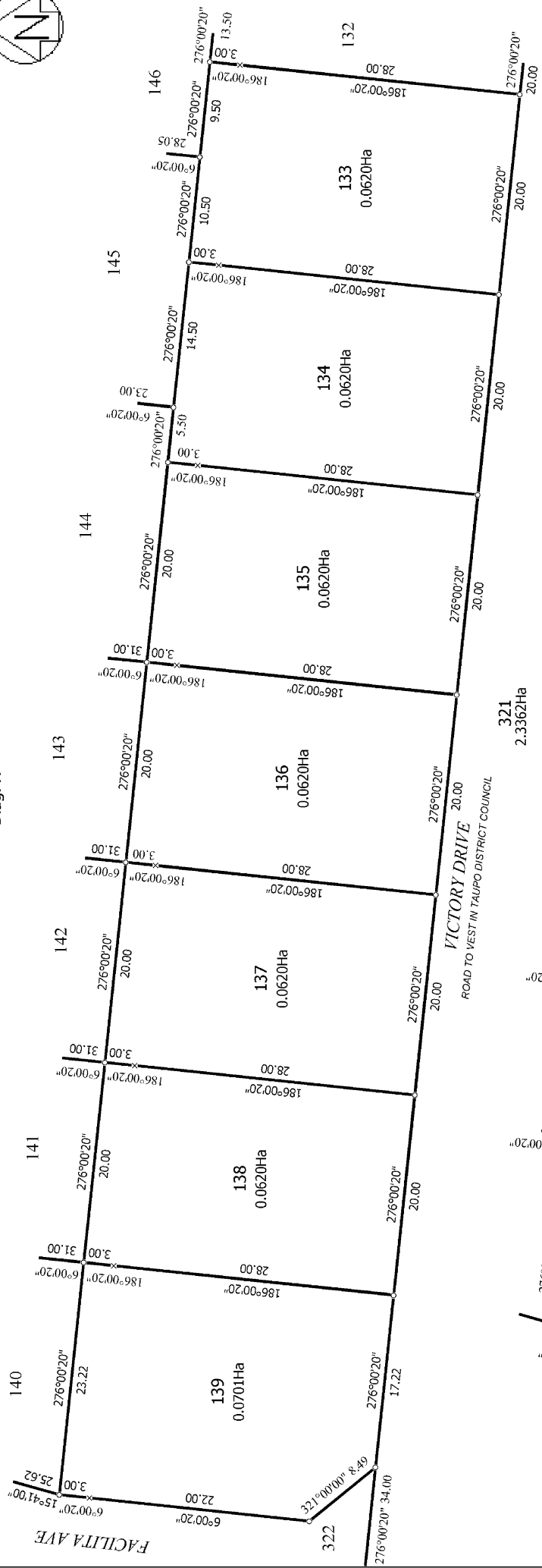
VICTORY DRIVE

T 8/19

Land District South Auckland	Lots 1-42, 127-161, 180-212, 301, 302, 305, 306, 310, 311, 313-315 & 320-322	Digital Survey Plan LT 356786 Approved on: 19/12/2005
Digitally Generated Plan Generated on: 19/12/2005 09:39am Page 77 of 88	Surveyor: Chadley Seth Keir Firm: Harrison Gierison Consultants Ltd (Te Survey Date: 19/07/2005	



Diag. X



Diag. V
Non Primary

T 9/19

Land District South Auckland	Lots 142, 127-161, 180-212, 301, 302, 305, 306, 310, 311, 313-315 & 320-322	Surveyor: Chadley Seth Keir Firm: Harrison Gierison Consultants Ltd (Te Survey Date: 19/07/2005	Digital Survey Plan LT 356786 Approved on: 19/12/2005
Digitally Generated Plan Generated on: 19/12/2005 09:39am Page 78 of 88	being a Subdivision of Sec 1 SO 58791		



T 10/19

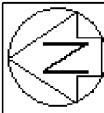
Land District South Auckland

Digitally Generated Plan
Generated on: 19/12/2005 09:39am Page 79 of 88

Lots 142, 127-161, 180-212, 301, 302, 305, 310, 311, 313-315 & 320-322
being a Subdivision of Sec 1 SO 58791

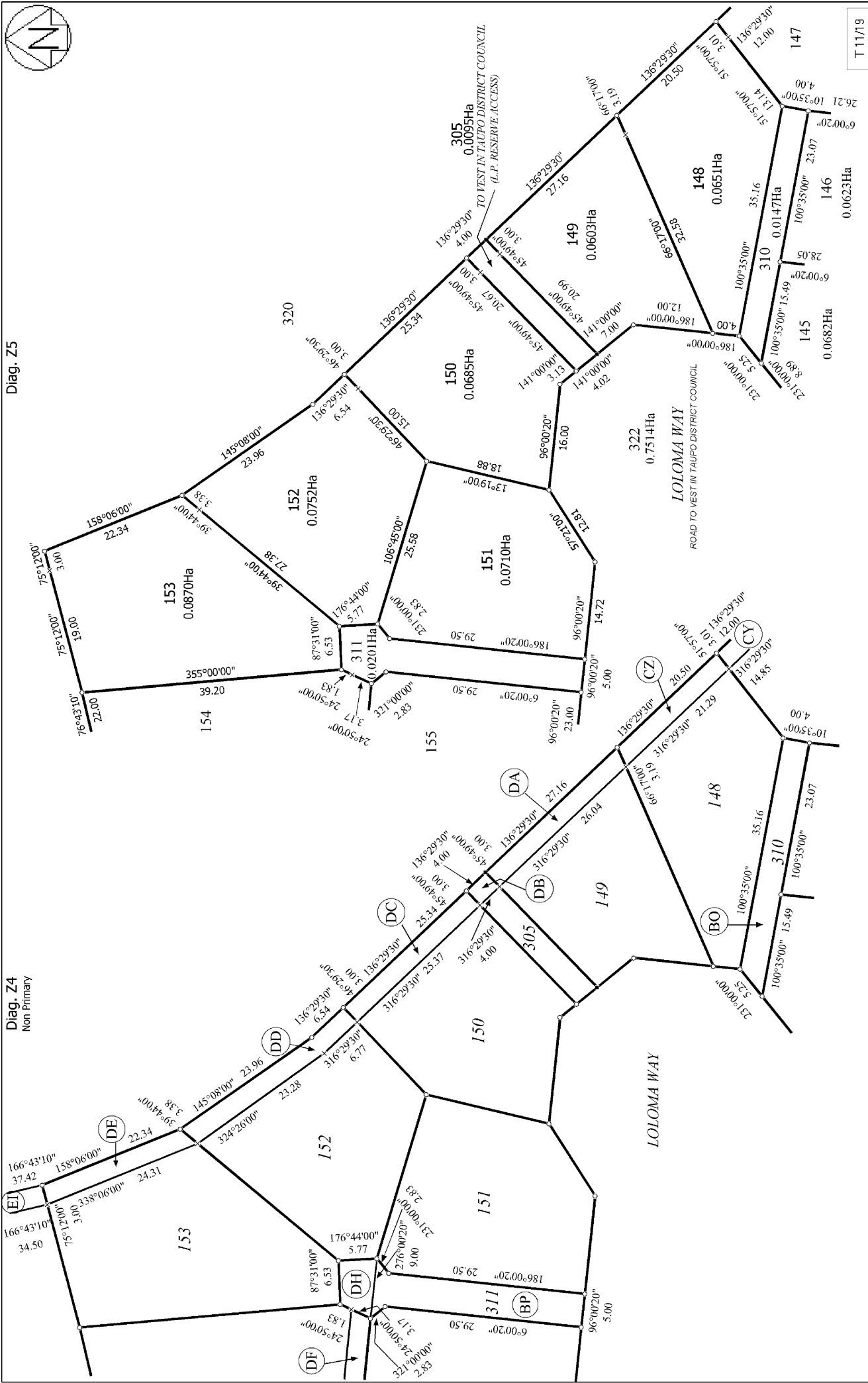
Surveyor: Chadley Seth Kair
Firm: Harrison Gimson Consultants Ltd (Te
Survey Date: 19/07/2005

Digital Survey Plan
LT 356786
Approved on: 19/12/2005



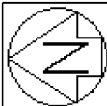
Diag. Z4
Non Primary

Diag. Z5

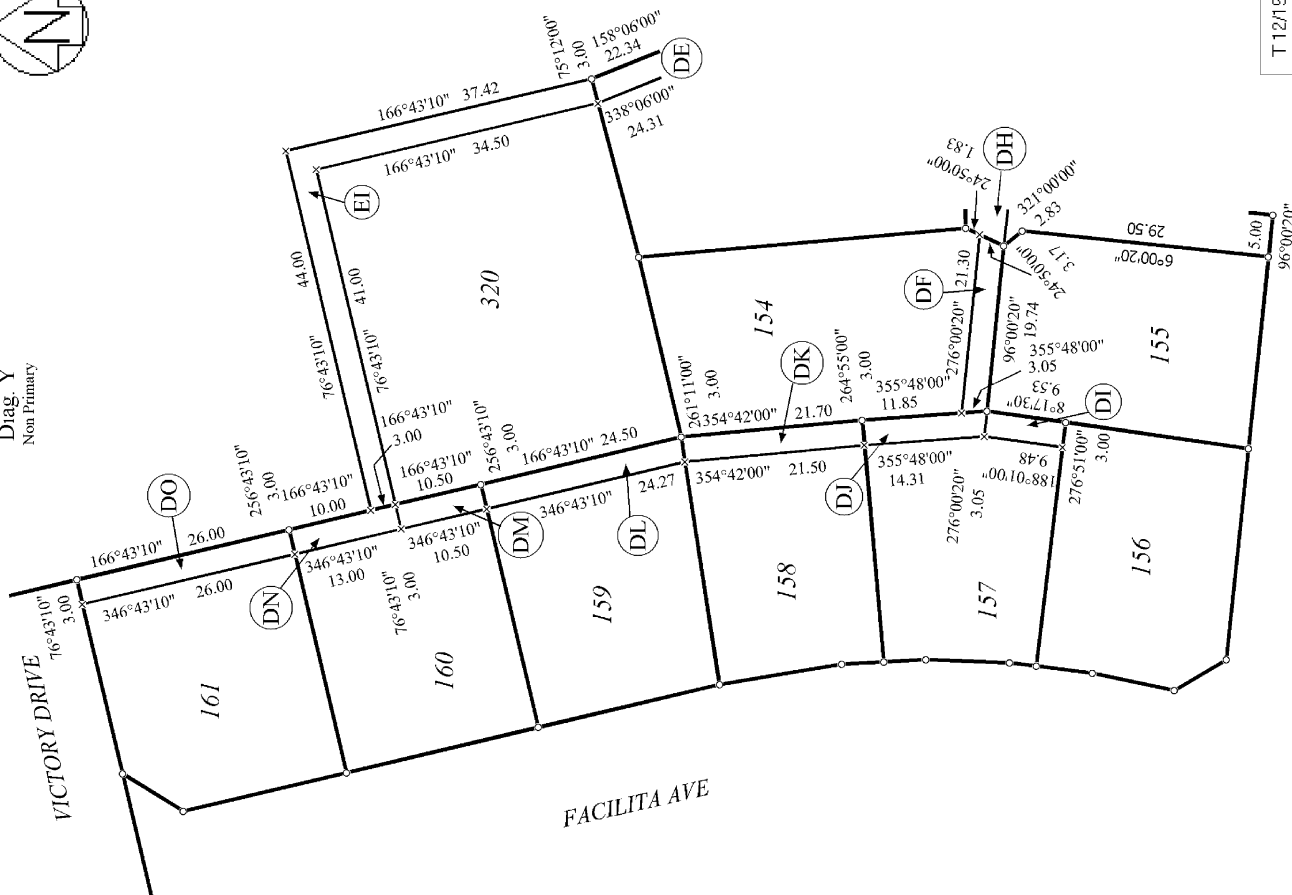


T 11/19

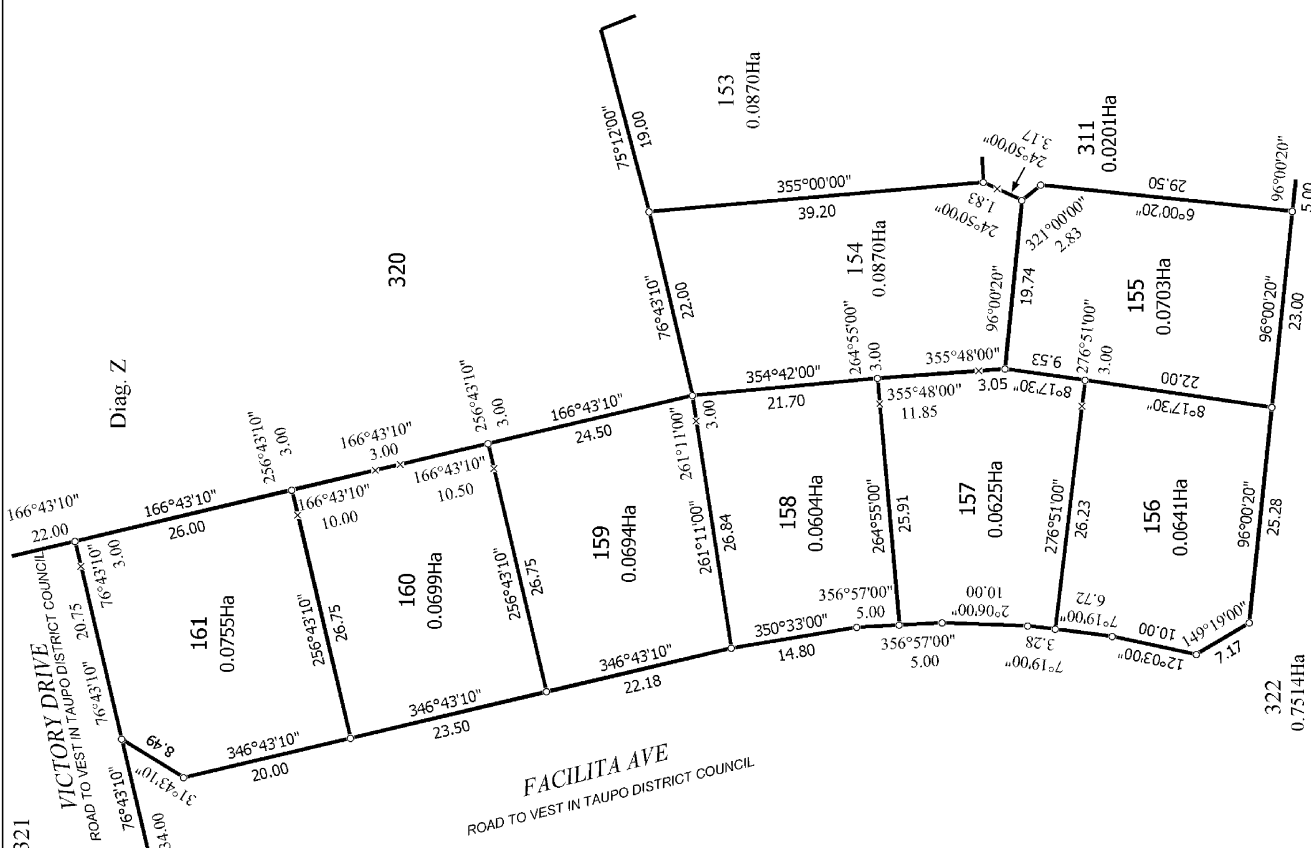
Land District South Auckland Digitally Generated Plan Generated on: 19/12/2005 09:39am Page 80 of 88	Lots 142, 127-161, 180-212, 301, 302, 305, 310, 311, 313-315 & 320-322 being a Subdivision of Sec 1 SO 58791	Surveyor: Chadley Seth Kair Firm: Harrison Gairson Consultants Ltd (Te Survey Date: 19/07/2005	Digital Survey Plan LT 356786 Approved on: 19/12/2005
--	---	--	---



Diag. Y
Non Primary



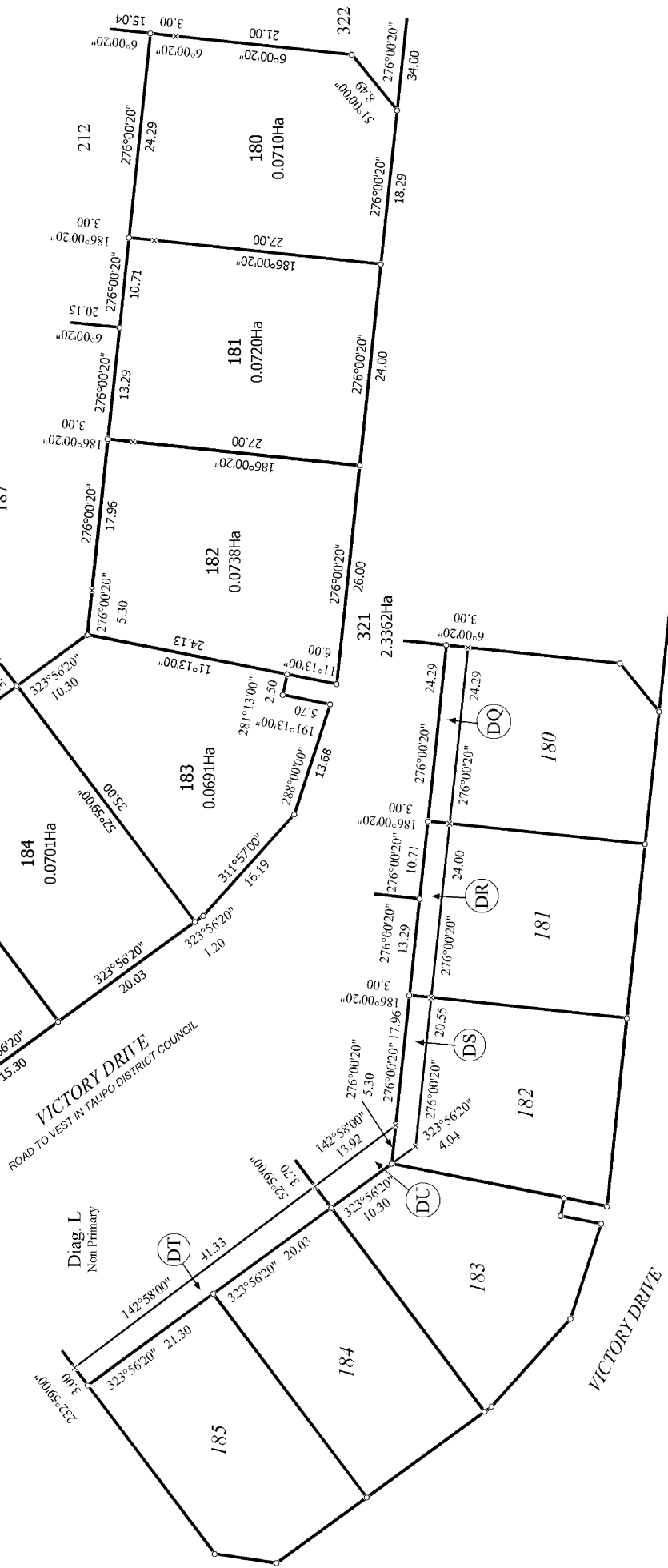
T 12/19



Land District South Auckland	Lots 1-42, 127-161, 180-212, 301, 302, 305, 306, 310, 311, 313-315 & 320-322	Surveyor: Chadley Seth Kair Firm: Harrison Gairson Consultants Ltd (Te	Digital Survey Plan LT 356786
Digitally Generated Plan Generated on: 19/12/2005 09:39am Page 81 of 88	being a Subdivision of Sec 1 SO 58791		Approved on: 19/12/2005

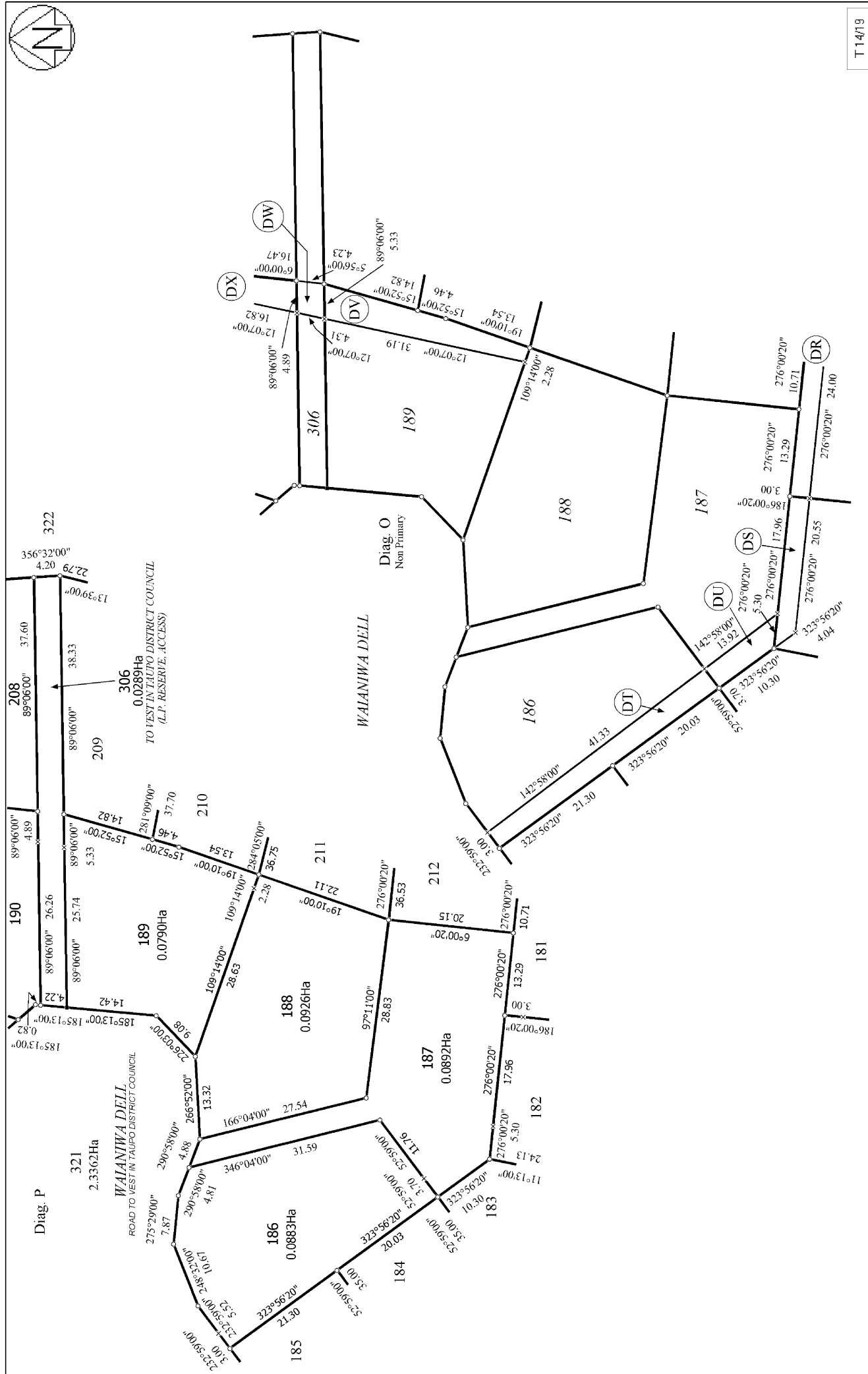
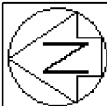


Diag. I



T 13/19

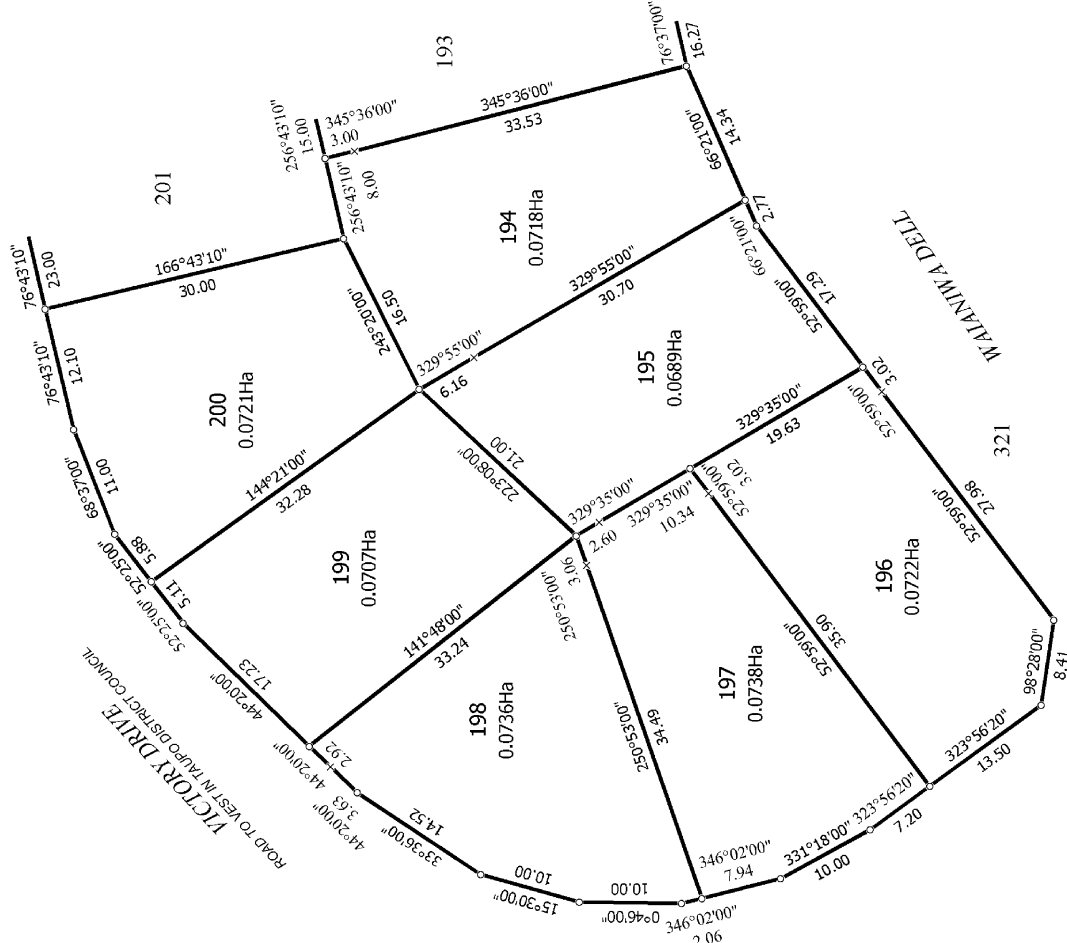
Land District South Auckland	Lots 1-42, 127-161, 180-212, 301, 302, 305, 306, 310, 311, 313-315 & 320-322 being a Subdivision of Sec 1 SO 58791	Surveyor: Chadley Seth Keir Firm: Harrison Grierson Consultants Ltd (Tē Survey Date: 19/07/2005	Digital Survey Plan LT 356786 Approved on: 19/12/2005
Digitally Generated Plan Generated on: 19/12/2005 09:39am Page 82 of 88			



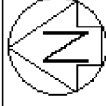
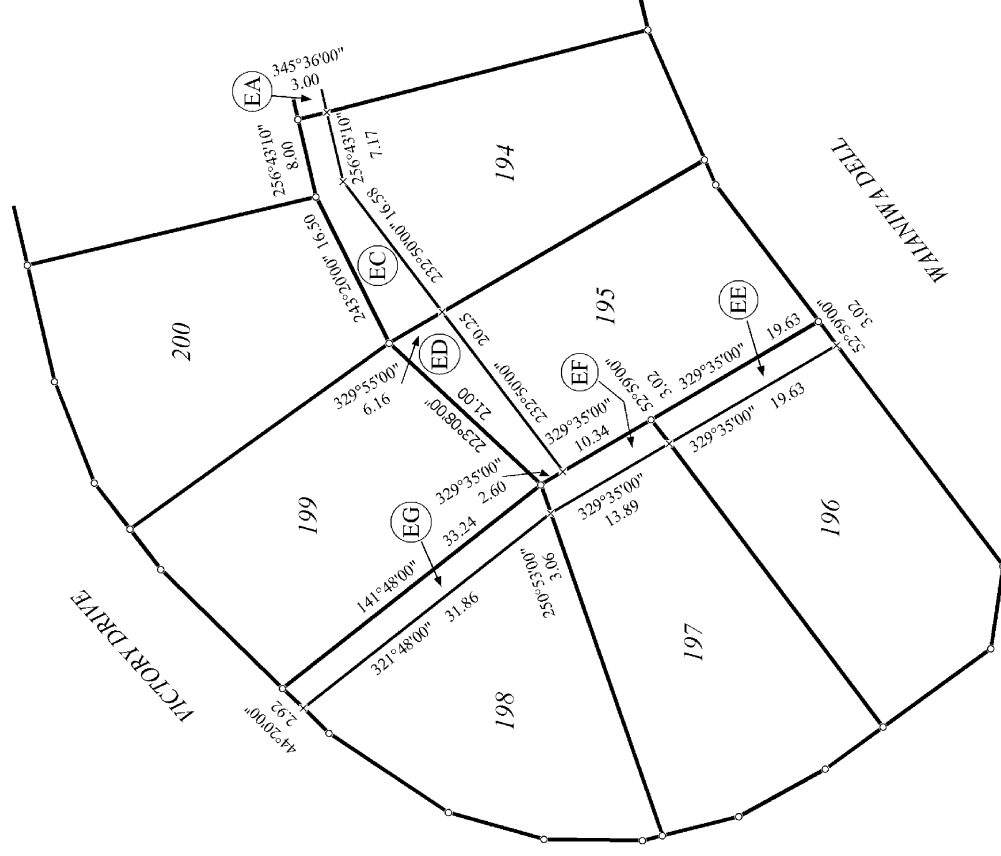
T 14/19

Land District South Auckland	Lots 1-42, 127-161, 180-212, 301, 302, 305, 306, 310, 311, 313-315 & 320-322 being a Subdivision of Sec 1 SO 58791	Digital Survey Plan LT 356786 Approved on: 19/12/2005
Digitally Generated Plan Generated on: 19/12/2005 09:39am Page 83 of 88	Surveyor: Chadley Seth Keir Firm: Harrison Grierison Consultants Ltd (Te Survey Date: 19/07/2005	

Diag. F



Diag. E
Non Primary



T 16/19

Land District South Auckland

Digitally Generated Plan

Generated on: 19/12/2005 09:39am Page 85 of 88

Lots 1-42, 127-161, 180-212, 301, 302, 305, 306, 310, 311, 313-315 & 320-322
being a Subdivision of Sec 1 SO 58791

Surveyor: Chadley Seth Kair

Firm: Harrison Grierson Consultants Ltd (Te

Survey Date: 19/07/2005

Digital Survey Plan

LT 356786

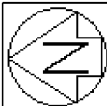
Approved on: 19/12/2005



Surveyor: Chadley Seth Keir
Firm: Harrison Grierson Consultants Ltd (T&A)
Survey Date: 19/07/2005

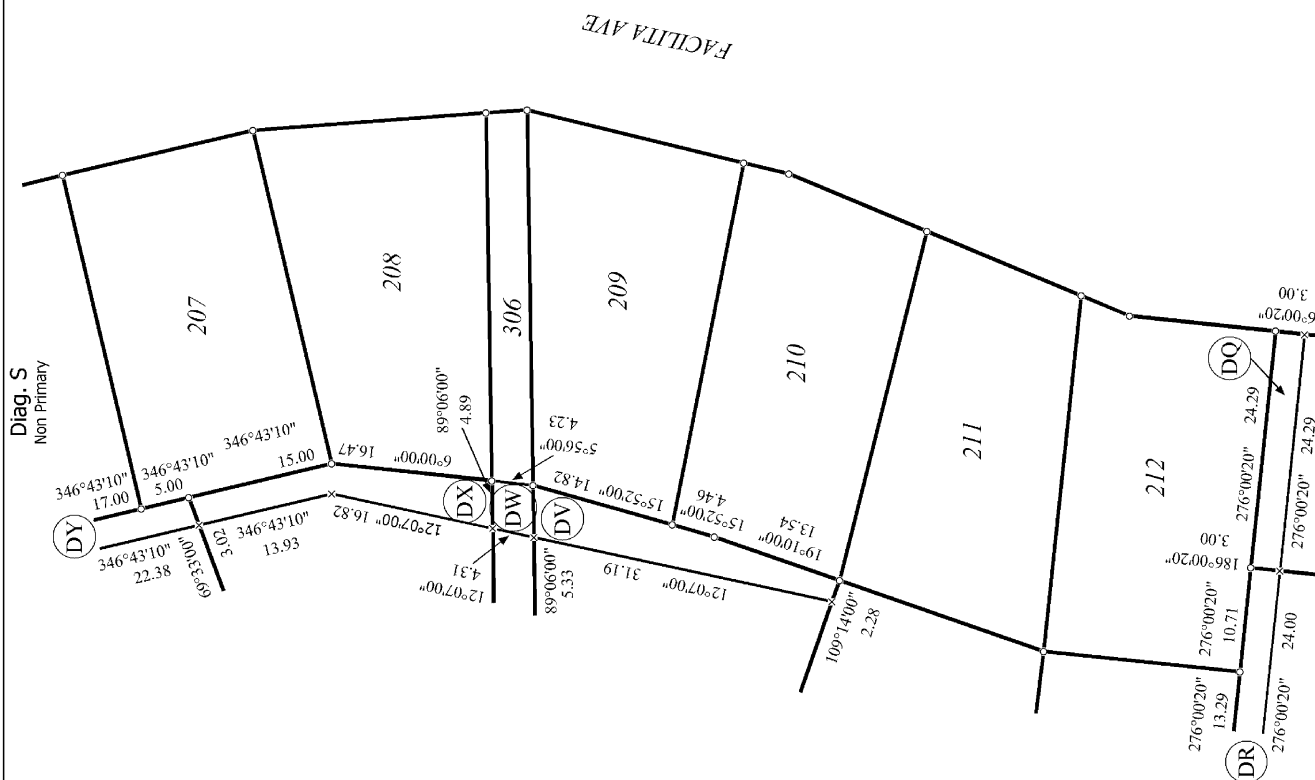
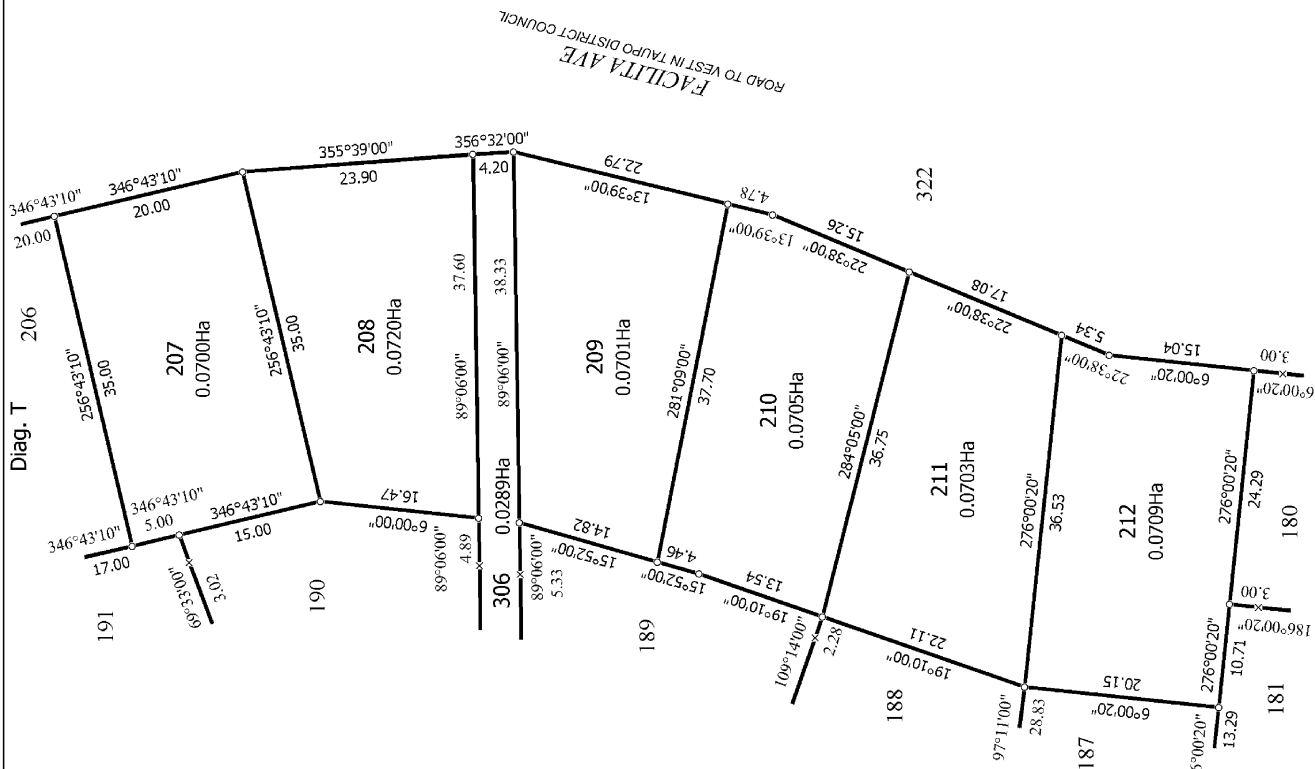
Lots 1-42, 127-161, 180-212, 301, 302, 305, 306, 310, 311, 313-315 & 320-322
being a Subdivision of Sec 1 SO 58791

Digital Survey Plan
LT 356786
Approved on: 19/12/200



Diag. T

Diag. S
Non Primary



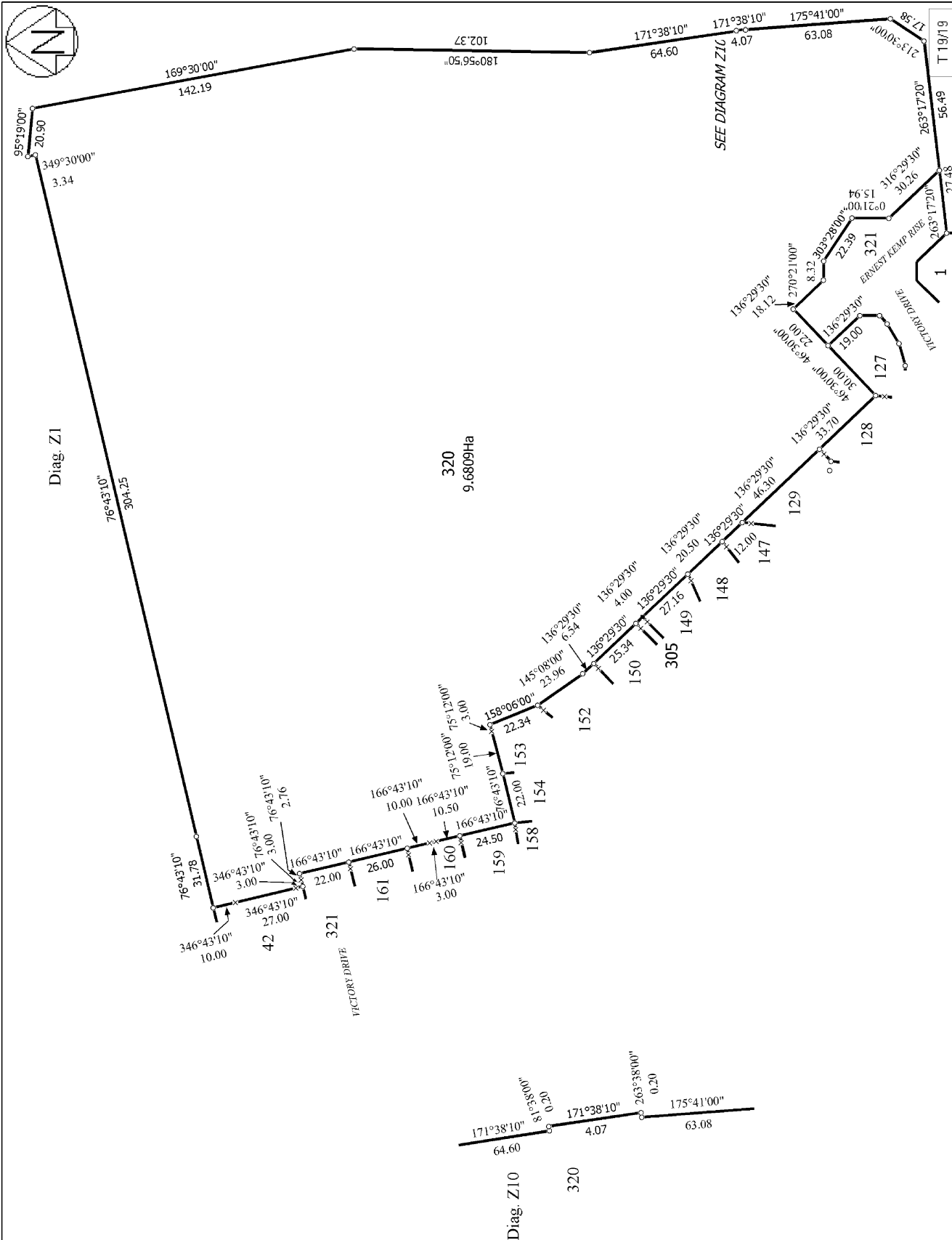
T 18/19

Land District South Auckland

Lots 142, 127-161, 180-212, 301, 302, 305, 306, 310, 311, 313-315 & 320-322
being a Subdivision of Sec 1 SO 58791

Surveyor: Chadley Seth Keir
Firm: Harrison Grieron Consultants Ltd (Te
Survey Date: 19/07/2005

Digital Survey Plan
LT 356786
Approved on: 19/12/2005



Land District South Auckland Digitally Generated Plan Generated on: 19/12/2005 09:39am Page 88 of 88	Lots 1-42, 127-161, 180-212, 301, 302, 305, 306, 310, 311, 313-315 & 320-322 being a Subdivision of Sec 1 SO 58791	Surveyor: Chadley Seth Keir Firm: Harrison Grierison Consultants Ltd (Te Survey Date: 19/07/2005	Digital Survey Plan LT 356786 Approved on: 19/12/2005
--	---	--	---