



Title Plan - LT 448831

Survey Number	LT 448831
Surveyor Reference	1850-124534-04 (Silverwood Rural-Residential)
Surveyor	Matthew John Hayward
Survey Firm	Harrison Grierson Consultants Ltd (Auckland)
Surveyor Declaration	I Matthew John Hayward, being a licensed cadastral surveyor, certify that: (a) this dataset provided by me and its related survey are accurate, correct and in accordance with the Cadastral Survey Act 2002 and the Rules for Cadastral Survey 2010, and (b) the survey was undertaken by me or under my personal direction. Declared on 30 Aug 2012 06:10 PM

Survey Details

Dataset Description	Lots 172 - 197, 231, 350, 351, 352 and 401 Being a Subdivision of Lot 252 DP 403714 and Lot 3 DP 426821		
Status	Approved as to Survey		
Land District	Wellington	Survey Class	Class A
Submitted Date	30/08/2012	Survey Approval Date	31/08/2012
		Deposit Date	

Territorial Authorities

Porirua City

Comprised In

CT 412342
CT 526392

Created Parcels

Parcels	Parcel Intent	Area	CT Reference
Area AF Deposited Plan 448831	Easement		
Lot 172 Deposited Plan 448831	Fee Simple Title	0.0636 Ha	580693
Lot 173 Deposited Plan 448831	Fee Simple Title	0.0622 Ha	580694
Lot 174 Deposited Plan 448831	Fee Simple Title	0.0622 Ha	580695
Lot 175 Deposited Plan 448831	Fee Simple Title	0.0623 Ha	580696
Lot 176 Deposited Plan 448831	Fee Simple Title	0.0700 Ha	580697
Area OB Deposited Plan 448831	Land Covenant		
Area OA Deposited Plan 448831	Land Covenant		
Area PB Deposited Plan 448831	Land Covenant		
Area PA Deposited Plan 448831	Land Covenant		
Lot 177 Deposited Plan 448831	Fee Simple Title	0.0749 Ha	580698
Lot 178 Deposited Plan 448831	Fee Simple Title	0.1064 Ha	580699
Lot 179 Deposited Plan 448831	Fee Simple Title	0.0796 Ha	580700
Lot 180 Deposited Plan 448831	Fee Simple Title	0.0846 Ha	580701
Lot 181 Deposited Plan 448831	Fee Simple Title	0.0866 Ha	580702



Title Plan - LT 448831

Created Parcels

Parcels	Parcel Intent	Area	CT Reference
Lot 182 Deposited Plan 448831	Fee Simple Title	0.0876 Ha	580703
Lot 183 Deposited Plan 448831	Fee Simple Title	0.1272 Ha	580704
Lot 184 Deposited Plan 448831	Fee Simple Title	1.0349 Ha	580705
Lot 185 Deposited Plan 448831	Fee Simple Title	2.1852 Ha	568451
Area GA Deposited Plan 448831	Land Covenant		
Area GB Deposited Plan 448831	Land Covenant		
Lot 186 Deposited Plan 448831	Fee Simple Title	1.2253 Ha	568452
Lot 187 Deposited Plan 448831	Fee Simple Title	1.0594 Ha	568453
Lot 188 Deposited Plan 448831	Fee Simple Title	0.5869 Ha	568454
Lot 189 Deposited Plan 448831	Fee Simple Title	1.5116 Ha	568455
Lot 190 Deposited Plan 448831	Fee Simple Title	1.3136 Ha	568456
Lot 191 Deposited Plan 448831	Fee Simple Title	1.3018 Ha	568457
Lot 192 Deposited Plan 448831	Fee Simple Title	1.0129 Ha	568458
Lot 193 Deposited Plan 448831	Fee Simple Title	1.1354 Ha	568459
Lot 194 Deposited Plan 448831	Fee Simple Title	1.0151 Ha	568460
Lot 195 Deposited Plan 448831	Fee Simple Title	1.0619 Ha	568461
Lot 196 Deposited Plan 448831	Fee Simple Title	1.2807 Ha	568462
Lot 197 Deposited Plan 448831	Fee Simple Title	0.8691 Ha	568463
Lot 350 Deposited Plan 448831	Vesting on Deposit for Recreation Reserve (Territorial Authority)	0.0796 Ha	568464
Lot 231 Deposited Plan 448831	Vesting on Deposit for Road	0.8493 Ha	
Lot 351 Deposited Plan 448831	Vesting on Deposit for Local Purpose Reserve	0.3477 Ha	568465
Lot 401 Deposited Plan 448831	Fee Simple Title	25.2017 Ha	568466
Lot 352 Deposited Plan 448831	Vesting on Deposit for Local Purpose Reserve	0.0102 Ha	568467
Area AA Deposited Plan 448831	Land Covenant		
Area AB Deposited Plan 448831	Land Covenant		
Area BA Deposited Plan 448831	Land Covenant		
Area BB Deposited Plan 448831	Land Covenant		
Area CA Deposited Plan 448831	Land Covenant		
Area CB Deposited Plan 448831	Land Covenant		
Area DA Deposited Plan 448831	Land Covenant		
Area DB Deposited Plan 448831	Land Covenant		
Area EA Deposited Plan 448831	Land Covenant		
Area FA Deposited Plan 448831	Land Covenant		
Area FB Deposited Plan 448831	Land Covenant		
Area HA Deposited Plan 448831	Land Covenant		
Area HB Deposited Plan 448831	Land Covenant		



Title Plan - LT 448831

Created Parcels

Parcels	Parcel Intent	Area	CT Reference
Area IA Deposited Plan 448831	Land Covenant		
Area IB Deposited Plan 448831	Land Covenant		
Area JA Deposited Plan 448831	Land Covenant		
Area JB Deposited Plan 448831	Land Covenant		
Area KA Deposited Plan 448831	Land Covenant		
Area KB Deposited Plan 448831	Land Covenant		
Area LA Deposited Plan 448831	Land Covenant		
Area LB Deposited Plan 448831	Land Covenant		
Area A Deposited Plan 448831	Land Covenant		
Area B Deposited Plan 448831	Land Covenant		
Area C Deposited Plan 448831	Land Covenant		
Area D Deposited Plan 448831	Easement		
Area E Deposited Plan 448831	Land Covenant		
Area F Deposited Plan 448831	Land Covenant		
Area G Deposited Plan 448831	Easement		
Area H Deposited Plan 448831	Land Covenant		
Area I Deposited Plan 448831	Easement		
Area K Deposited Plan 448831	Land Covenant		
Area N Deposited Plan 448831	Land Covenant		
Area P Deposited Plan 448831	Land Covenant		
Area R Deposited Plan 448831	Easement		
Area S Deposited Plan 448831	Easement		
Area T Deposited Plan 448831	Easement		
Area U Deposited Plan 448831	Easement		
Area V Deposited Plan 448831	Easement		
Area Q Deposited Plan 448831	Easement		
Area X Deposited Plan 448831	Easement		
Area W Deposited Plan 448831	Easement		
Area Y Deposited Plan 448831	Easement		
Area AC Deposited Plan 448831	Easement		
Area AD Deposited Plan 448831	Easement		
Area AE Deposited Plan 448831	Easement		
Area CD Deposited Plan 448831	Easement		
Area BE Deposited Plan 448831	Easement		
Area HH Deposited Plan 448831	Easement		
Area BG Deposited Plan 448831	Easement		
Area BH Deposited Plan 448831	Easement		
Area BI Deposited Plan 448831	Easement		
Area BJ Deposited Plan 448831	Easement		
Area BK Deposited Plan 448831	Easement		



Title Plan - LT 448831

Created Parcels

Parcels	Parcel Intent	Area	CT Reference
Area BM Deposited Plan 448831	Easement		
Area BN Deposited Plan 448831	Easement		
Area BO Deposited Plan 448831	Land Covenant		
Area BQ Deposited Plan 448831	Easement		
Area BR Deposited Plan 448831	Easement		
Area BS Deposited Plan 448831	Easement		
Area BT Deposited Plan 448831	Easement		
Area BU Deposited Plan 448831	Easement		
Area BV Deposited Plan 448831	Easement		
Area BW Deposited Plan 448831	Easement		
Area BX Deposited Plan 448831	Easement		
Area BY Deposited Plan 448831	Easement		
Area BP Deposited Plan 448831	Easement		
Area EB Deposited Plan 448831	Land Covenant		
Area EC Deposited Plan 448831	Land Covenant		
Area L Deposited Plan 448831	Easement		
Area M Deposited Plan 448831	Land Covenant		
Area DX Deposited Plan 448831	Easement		
Area ZE Deposited Plan 448831	Land Covenant		
Area DC Deposited Plan 448831	Easement		
Area ZF Deposited Plan 448831	Land Covenant		
Area DE Deposited Plan 448831	Easement		
Area ZD Deposited Plan 448831	Land Covenant		
Area DG Deposited Plan 448831	Easement		
Area ZC Deposited Plan 448831	Land Covenant		
Area ZG Deposited Plan 448831	Land Covenant		
Area DJ Deposited Plan 448831	Easement		
Area ZA Deposited Plan 448831	Land Covenant		
Area ZB Deposited Plan 448831	Land Covenant		
Area MZ Deposited Plan 448831	Easement		
Area MA Deposited Plan 448831	Easement		
Area MB Deposited Plan 448831	Easement		
Area MC Deposited Plan 448831	Easement		
Area MD Deposited Plan 448831	Easement		
Area ME Deposited Plan 448831	Easement		
Area MF Deposited Plan 448831	Easement		
Area MG Deposited Plan 448831	Easement		
Area MH Deposited Plan 448831	Easement		
Area MI Deposited Plan 448831	Easement		
Area MJ Deposited Plan 448831	Easement		



Title Plan - LT 448831

Created Parcels

Parcels	Parcel Intent	Area	CT Reference
Area MK Deposited Plan 448831	Easement		
Area NA Deposited Plan 448831	Land Covenant		
Area NB Deposited Plan 448831	Land Covenant		
Area NC Deposited Plan 448831	Land Covenant		
Area ND Deposited Plan 448831	Land Covenant		
Area NE Deposited Plan 448831	Land Covenant		
Area ML Deposited Plan 448831	Easement		
Area MM Deposited Plan 448831	Easement		
Area NF Deposited Plan 448831	Land Covenant		
Area NG Deposited Plan 448831	Land Covenant		
Area NH Deposited Plan 448831	Land Covenant		
Area NI Deposited Plan 448831	Easement		
Area BZ Deposited Plan 448831	Easement		
Total Area		44.0495 Ha	

Memorandum of Easements			
(Pursuant to s243 Resource Management Act 1991)			
Purpose	Shown	Servient	Dominant Tenement
Right of Way Right to convey water, electricity, gas, telecommunications and computer media	ME	Lot 178 hereon	Lot 179, 180, 181, 182 & 183 hereon
	MF		
	MD	Lot 179 hereon	Lot 180, 181, 182 & 183 hereon
	MC	Lot 180 hereon	Lot 181, 182 & 183 hereon
	MB	Lot 181 hereon	Lot 182 & 183 hereon
	MA	Lot 182 hereon	Lot 183 hereon
	MM	Lot 184 hereon	Lot 185 hereon
Right of Way Right to drain sewage Right to convey water, electricity, gas, telecommunications and computer media	BK	Lot 187 hereon	Lot 186 hereon
	BJ	Lot 188 hereon	Lots 187 & 186 hereon
	BI		
	BH		
	BG		
	BI	Lot 189 hereon	Lot 189 hereon
	BH		
	BG		
	AC	Lot 190 hereon	Lot 191 hereon
	AD		
	AE		
	BE	Lot 194 hereon	Lot 193 hereon
	HH	Lot 196 hereon	Lot 197 hereon
Right of Way	MM	Lot 184 hereon	Lot 177 hereon
Right to convey Electricity	L	Lot 351 hereon	Lot 203 DP 403714
Right to drain sewage Right to convey water, electricity, gas, telecommunications and computer media	NI	Lot 177 hereon	Lot 185 hereon

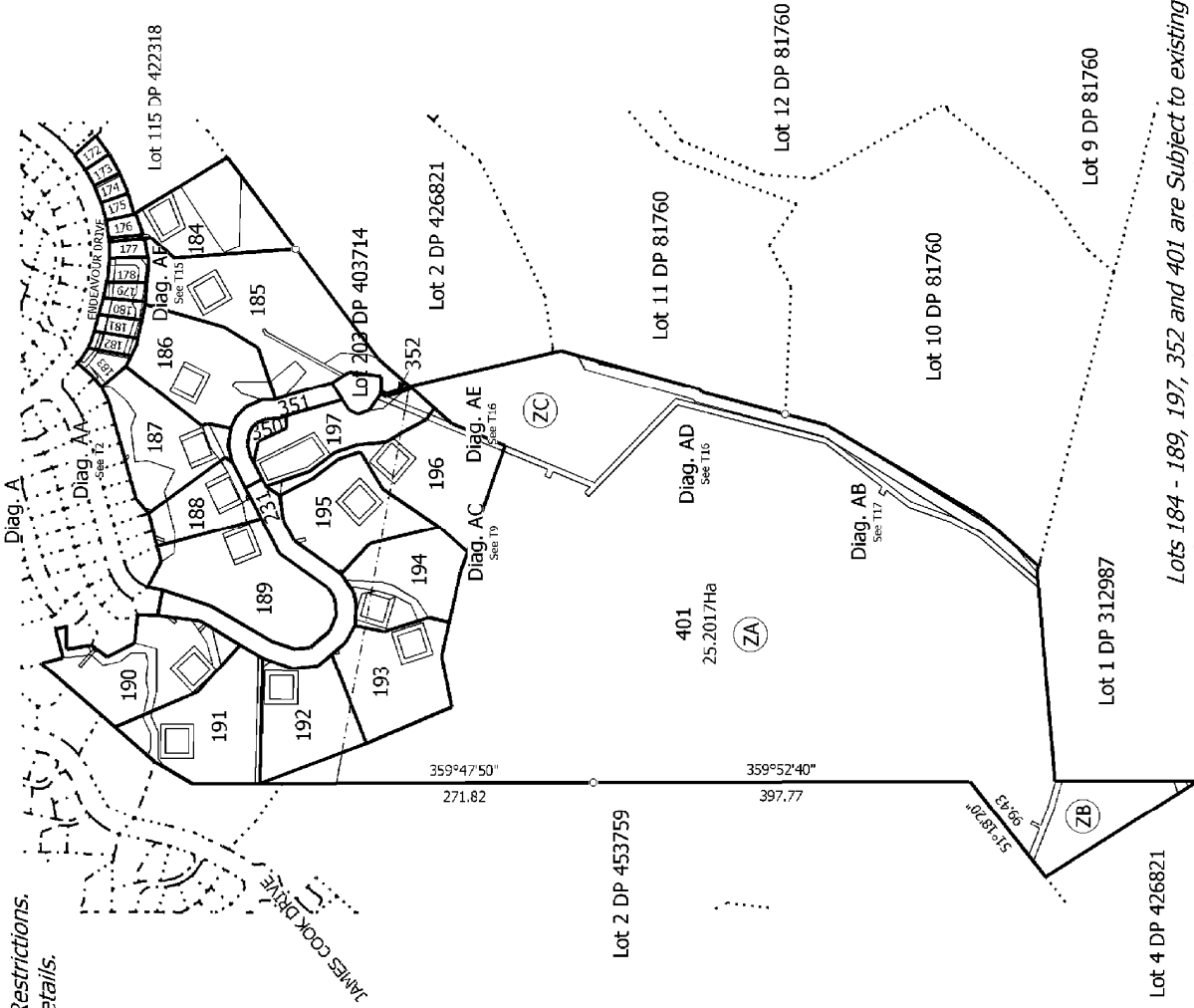
Memorandum of Easements in Gross			
(Pursuant to s243 Resource Management Act 1991)			
Purpose	Shown	Servient	Grantee
Right to drain water and sewage	MJ	Lot 183 hereon	Porirua City Council
	MI	Lot 182 hereon	
	MH	Lot 179 hereon	
	MG	Lot 178 hereon	
	MF		
Right to drain water	MZ	Lot 174 hereon	
	AD	Lot 190 hereon	
	AF		
	CD	Lot 192 hereon	
	BT	Lot 193 hereon	
	BS	Lot 195 hereon	
	BR		
	ML	Lot 183 hereon	
Right to drain sewage	BI	Lot 188 hereon	
	BH		
	MK	Lot 183 hereon	
Right to Convey Water	L	Lot 351 hereon	
Pedestrian Right of Way	Q	Lot 190 hereon	Porirua City Council
	S		
	T		
	U		
	V		
	X		
	W	Lot 191 hereon	
Right of Way	L	Lot 351 hereon	Wellington Regional Council

Schedule of Proposed Easements in Gross			
Purpose	Shown	Servient	Grantee
Right to convey electricity	Y	Lot 191 hereon	WEL Networks Limited

Schedule of Existing Easements			
Purpose/Interest	Shown	Servient	Created By
Right to Drain Water	T (CG on DP 403714)	Lot 190 hereon	8257808.23
	U (CF on DP 403714)		

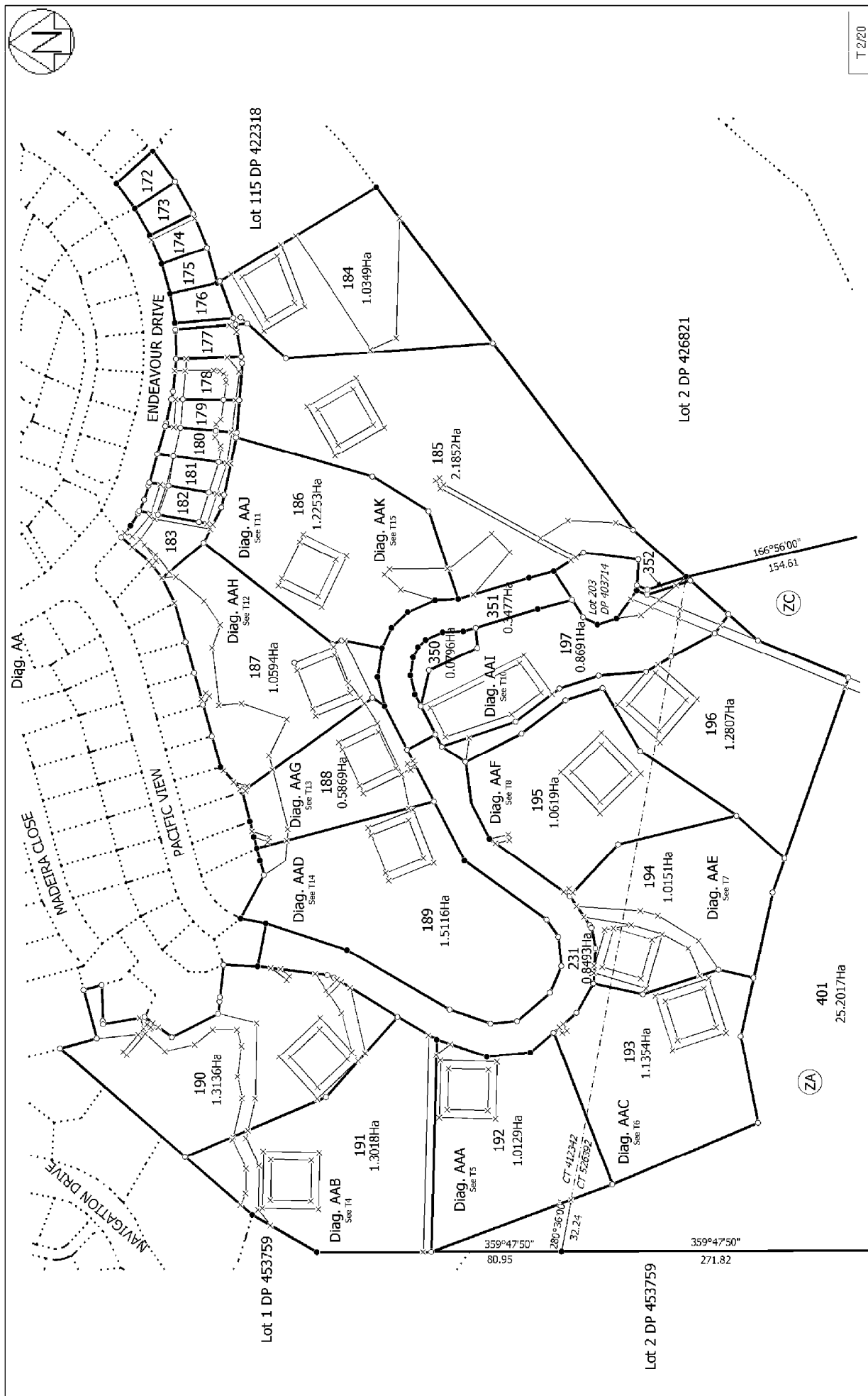
Schedule of Easements to be Surrendered			
Purpose/Interest	Shown	Servient	Created By
Right of Way	CC on DP 403714	Lot 252 DP 403714	8257808.19
Right to convey water			8257808.20
Right to convey electricity			
Right of Way			8257808.22

Schedule of Existing Easements in Gross				
Purpose/Interest	Shown	Servient	Created By	Grantee
Right to drain water	BQ (AE on DP 403714)	Lot 187 hereon	8257808.19	Porirua City Council
	BN (Part AI on DP 403714)			
	BP (Part AI on DP 403714)	Lot 188 hereon		
	BM (AL on DP 403714)			
	R (Part CE on DP 403714)	Lot 190 hereon		
	S (Part CE on DP 403714)			
	D (CH on DP 403714)	Lot 185 hereon		
Right to convey gas	BX (G8 on DP 426821)	Lot 401 hereon	8447908.12	Vector Gas Limited
Pipeline Easement	BY (G5 on DP 426821)		753538, 753539 & 753540	
	DX (G6 on DP 426821)			
	DJ (G7 on DP 426821)			
	DC (W9 on DP 426821)			
	DE (W10 on DP 426821)			
	DG (W11 on DP 426821)			
Right to Gas Supply	DX (G6 on DP 426821)		B068926.1	Vector Gas Limited (Formerly Natural Gas Corporation of New Zealand)
	DJ (G7 on DP 426821)			
Right to Convey Water	DC (W9 on DP 426821)	Lot 401 hereon	8257808.22	Wellington Regional Council
	DE (W10 on DP 426821)			
	DG (W11 on DP 426821)		8447908.11	
	BV (W12 on DP 426821)		6675234.6	
	BW (W7 on DP 426821)	Lot 196 hereon	8447908.11	
	BU (Part W8 on DP 426821)			
	BZ (Part W8 on DP 426821)	Lot 197 hereon	8257808.22	
	I (ZN on DP 403714)			
	G (CK on DP 403714)			



Lots 184 - 189, 197, 352 and 401 are Subject to existing Land Covenants. Refer to Existing Land Covenant Schedule and Consent Notices (8257808.17 & 8447908.5).

Land District: Wellington	Lots 172 - 197, 231, 350, 351, 352 and 401 Being a Subdivision of Lot 252 DP 403714 and Lot 3 DP 426821	Surveyor: Matthew John Hayward Firm: Harrison Grierson Consultants Ltd (Au	Title Plan LT 448831 Approved on: 31/08/2012
Digitally Generated Plan Generated on: 31/08/2012 07:08am Page 10 of 29			



T 2/20

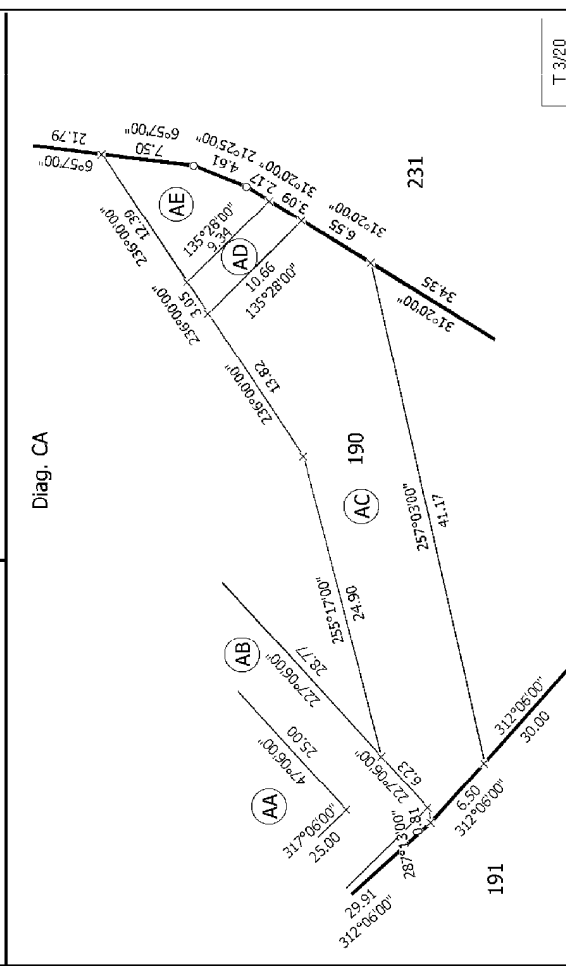
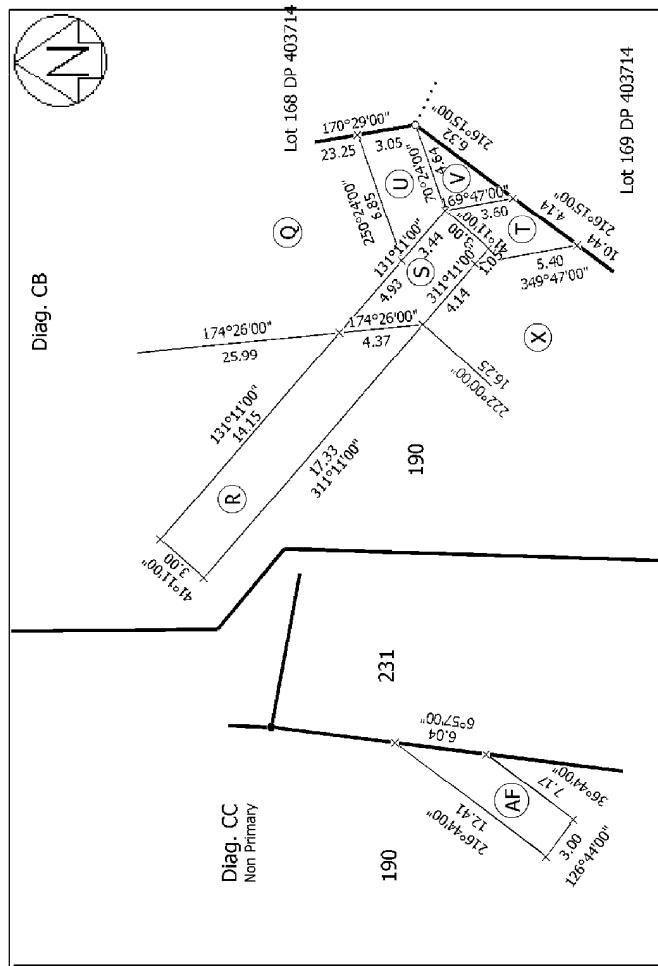
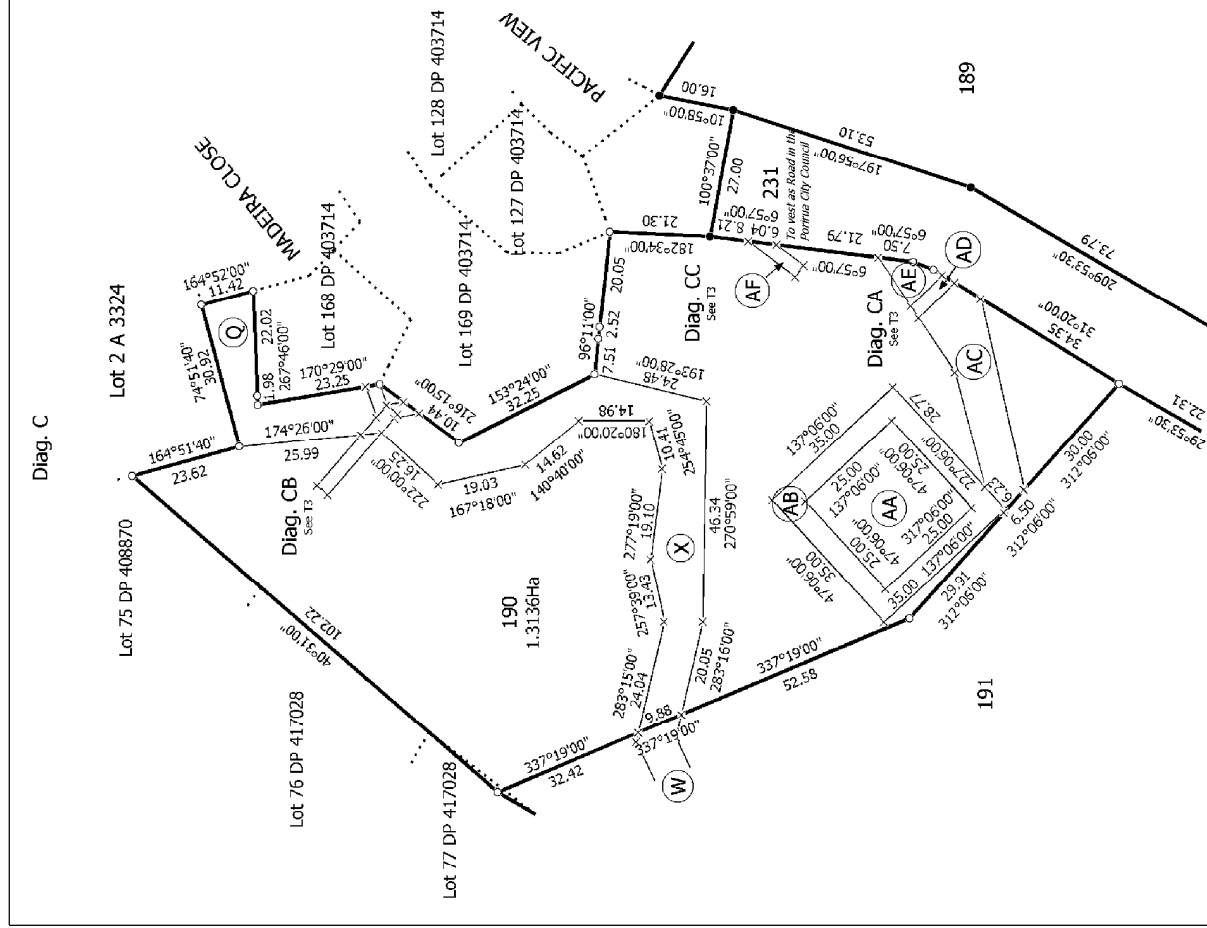
Land District: Wellington

Digitally Generated Plan

Lots 172 - 197, 231, 350, 351, 352 and 401 Being a Subdivision of Lot 252 DP 403714 and Lot 3 DP 426821

Surveyor: Matthew John Hayward
Firm: Harrison Grierson Consultants Ltd (Au

Title Plan
LT 448831
Approved on: 31/08/2012



Land District: Wellington

Digitally Generated Plan

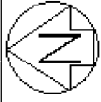
Lots 172 - 197, 231, 350, 351, 352 and 401 Being a Subdivision of Lot 252 DP 403714 and Lot 3 DP 426821

Surveyor: Matthew John Hayward
Firm: Harrison Grierson Consultants Ltd (Au

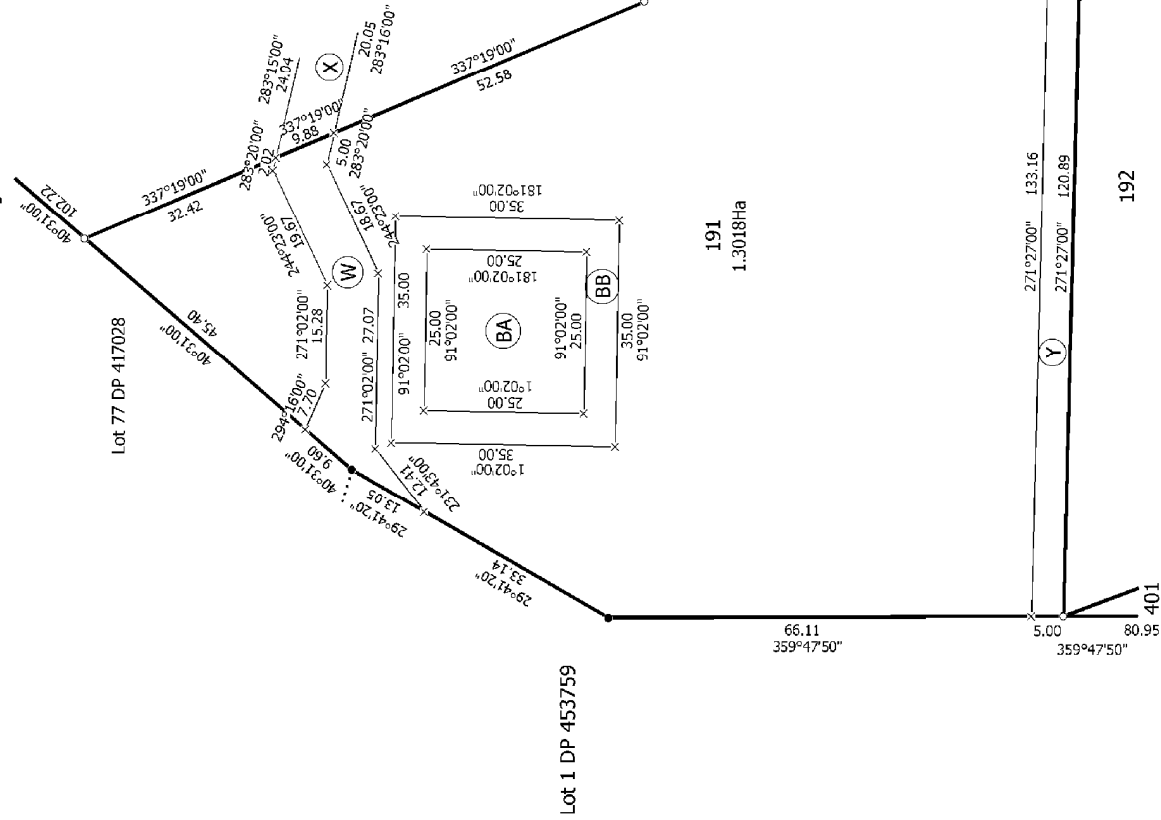
Title Plan
LT 448831

LI 440031
Approved on: 31/08/2012

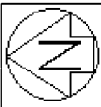
T 3/20



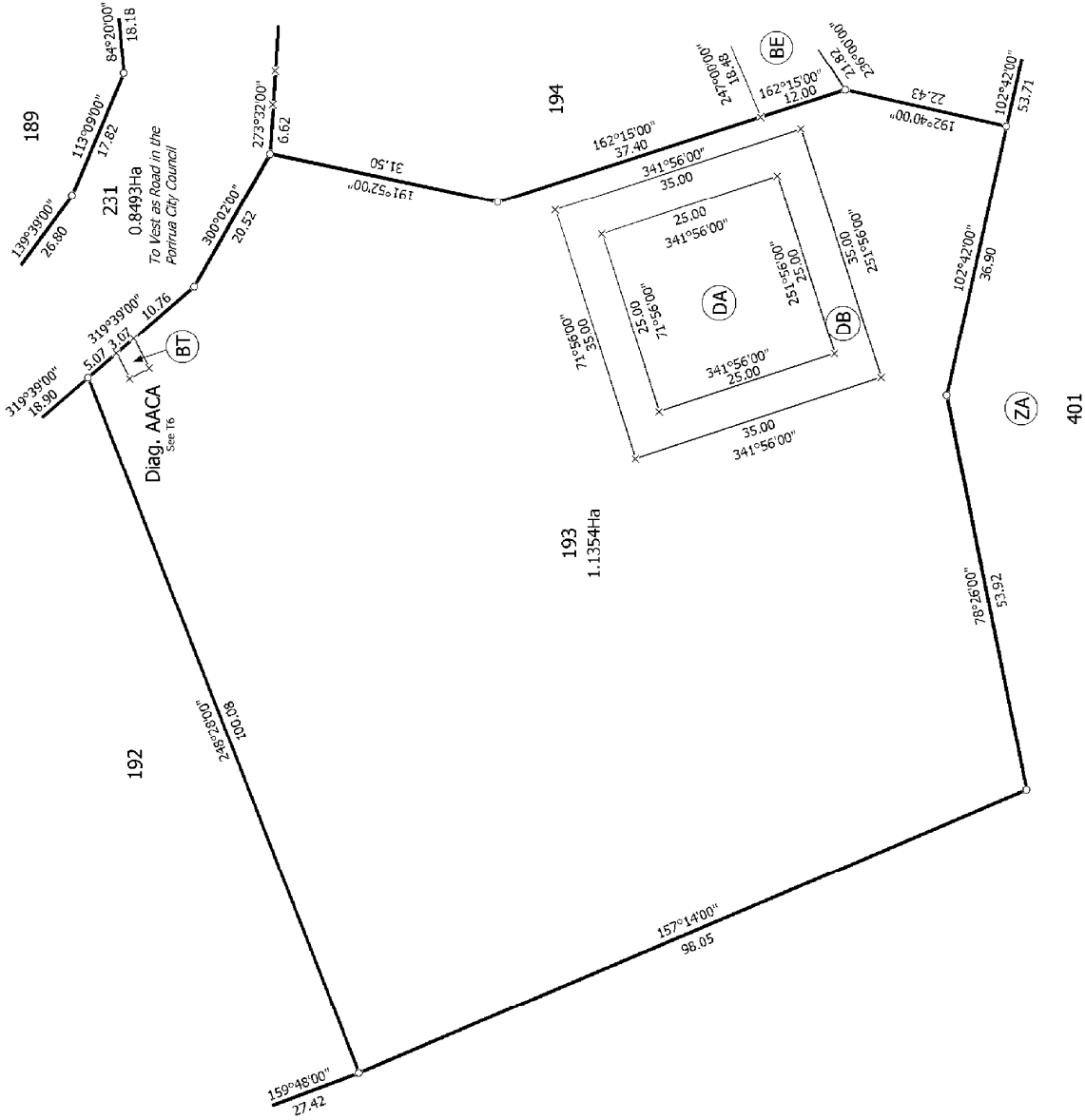
Diag. AAB



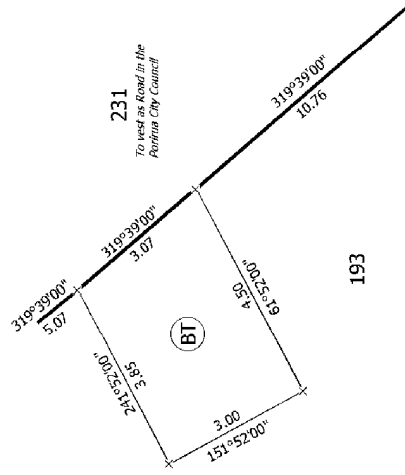
Land District: Wellington	Lots 172 - 197, 231, 350, 351, 352 and 401 Being a Subdivision of Lot 252 DP 403714 and Lot 3 DP 426821	Surveyor: Matthew John Heyward Firm: Harrison Grierson Consultants Ltd (A)	Title Plan LT 448831 Approved on: 31/08/2012
Digitally Generated Plan Generated on: 31/08/2012 07:06am Page 13 of 29			



Diag. AAC



Diag. AAC



T 6/20

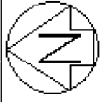
Land District: Wellington

Lots 172 - 197, 231, 350, 351, 352 and 401 Being a Subdivision of Lot 252 DP 403714 and Lot 3 DP 426821

Digitally Generated Plan
Generated on: 31/08/2012 07:08am Page 15 of 29

Surveyor: Matthew John Heyward
Firm: Harrison Grierson Consultants Ltd (Au.

Title Plan
LT 448831
Approved on: 31/08/2012



Diag. AAE

189



193

195

193

194
1.0151Ha

196

401

ZA

T 7/20

Land District: Wellington

Lots 172 - 197, 231, 350, 351, 352 and 401 Being a Subdivision of Lot 252 DP

Title Plan

LT 448831

Approved on: 31/08/2012

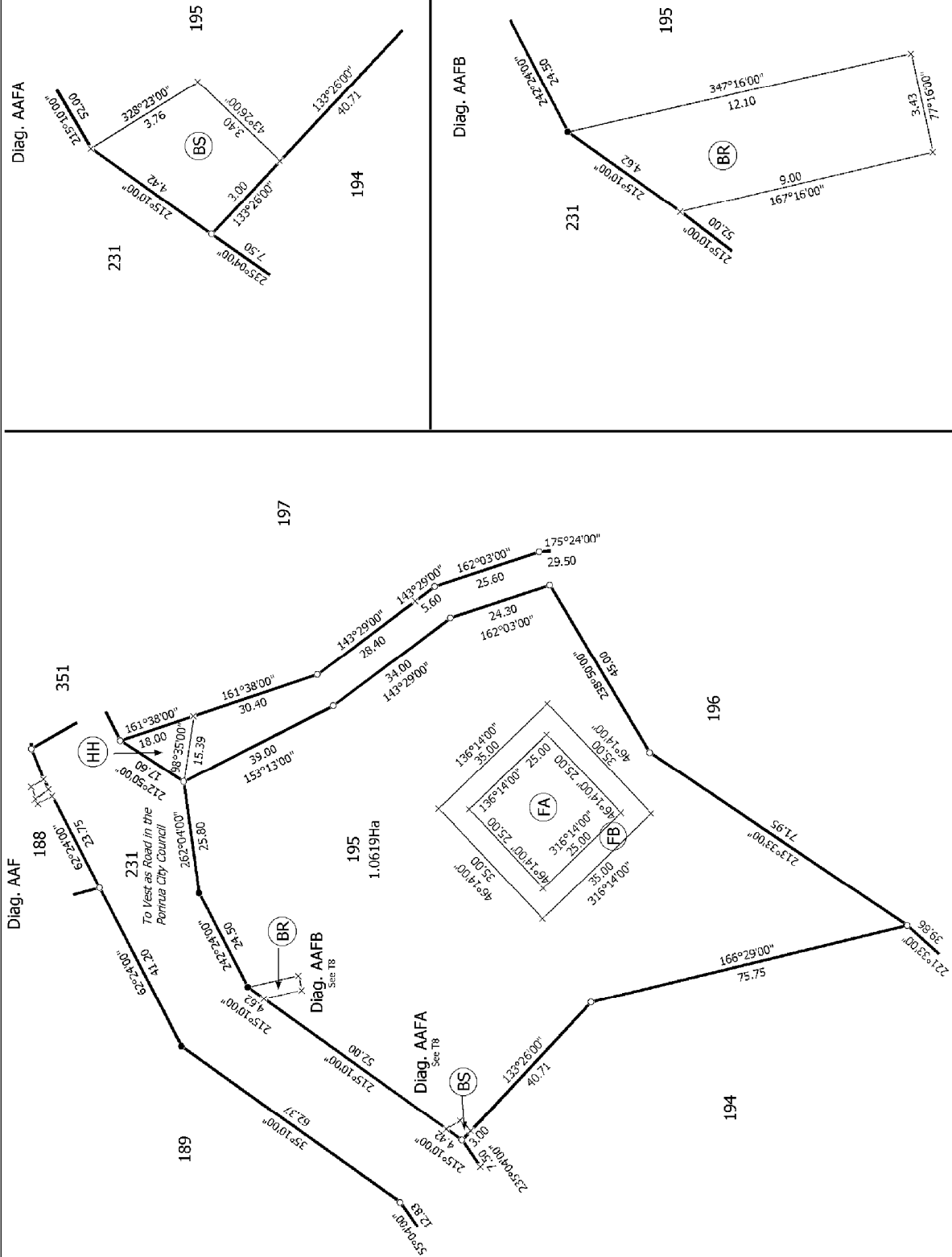
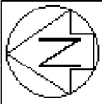
Surveyor: Matthew John Heyward

Firm: Harrison Grierson Consultants Ltd (A.

Digitally Generated Plan

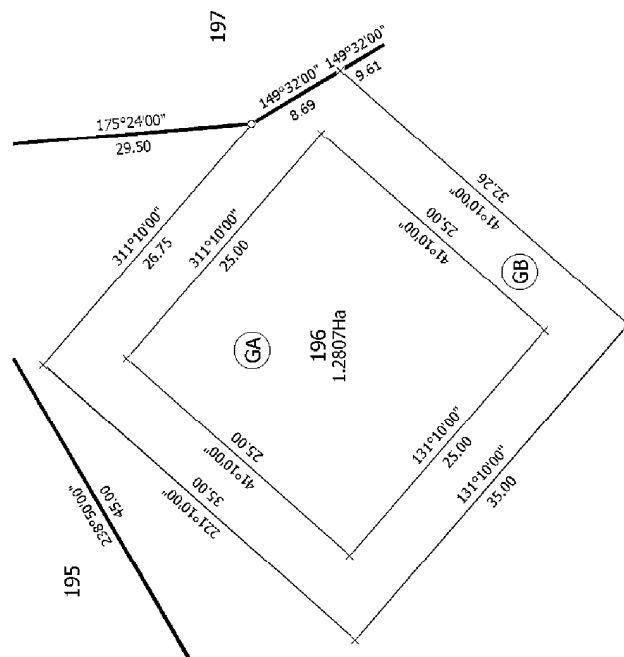
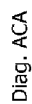
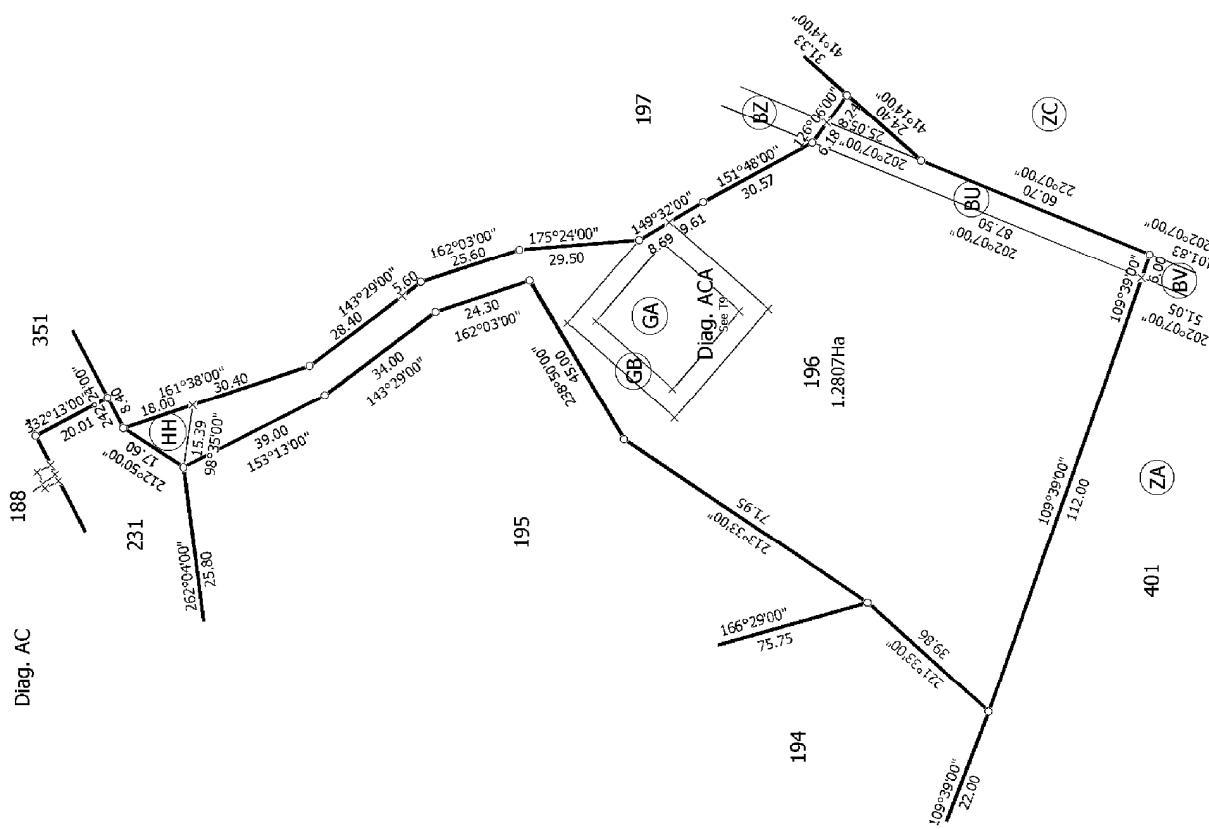
Generated on: 31/08/2012 07:08am Page 15 of 29

403714 and Lot 3 DP 426821



T 8/20

Land District: Wellington	Lots 172 - 197, 231, 350, 351, 352 and 401 Being a Subdivision of Lot 252 DP 403714 and Lot 3 DP 426821	Surveyor: Matthew John Heyward Firm: Harrison Grierson Consultants Ltd (A.	Title Plan LT 448831 Approved on: 31/08/2012
Digitally Generated Plan Generated on: 31/08/2012 07:00am Page 17 of 29			



T 9/20

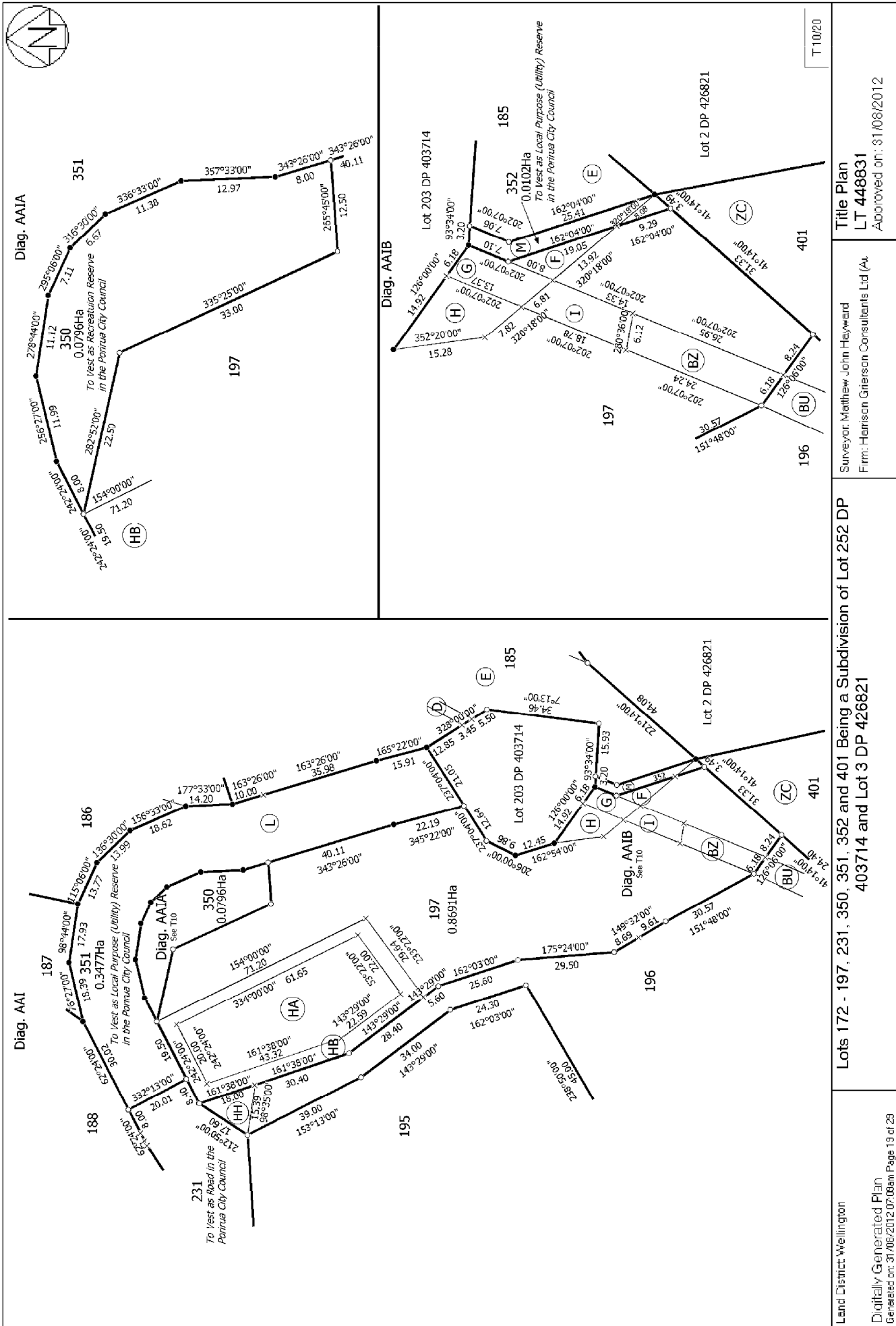
Land District: Wellington

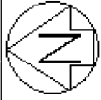
Digitally Generated Plan

Lots 172 - 197, 231, 350, 351, 352 and 401 Being a Subdivision of Lot 252 DP 403714 and Lot 3 DP 426821

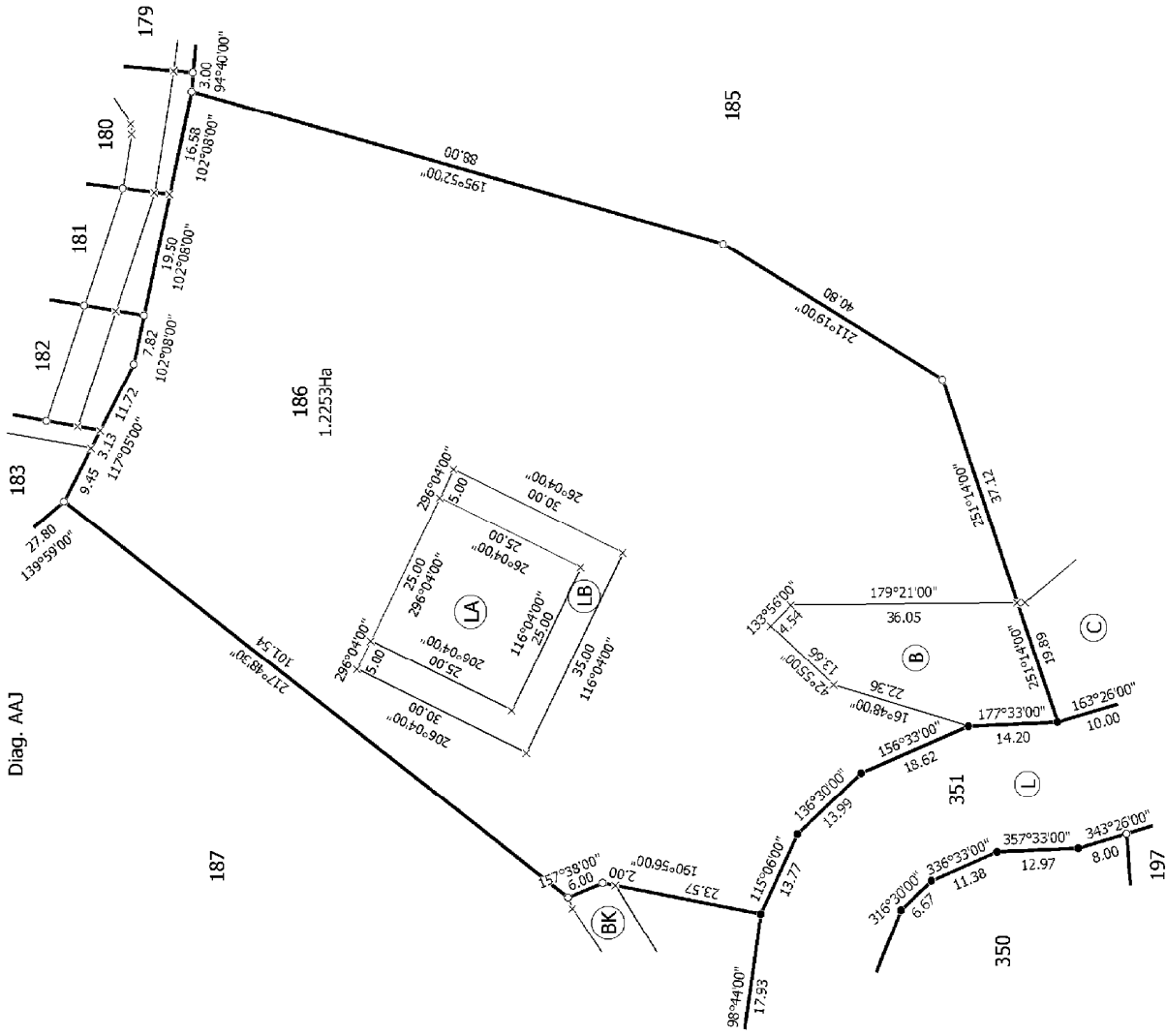
Surveyor: Matthew John Hayward
Firm: Harrison Grierson Consultants Ltd (Au

Title Plan
LT 448831
Approved on: _____





Diag. AAJ



T11/20

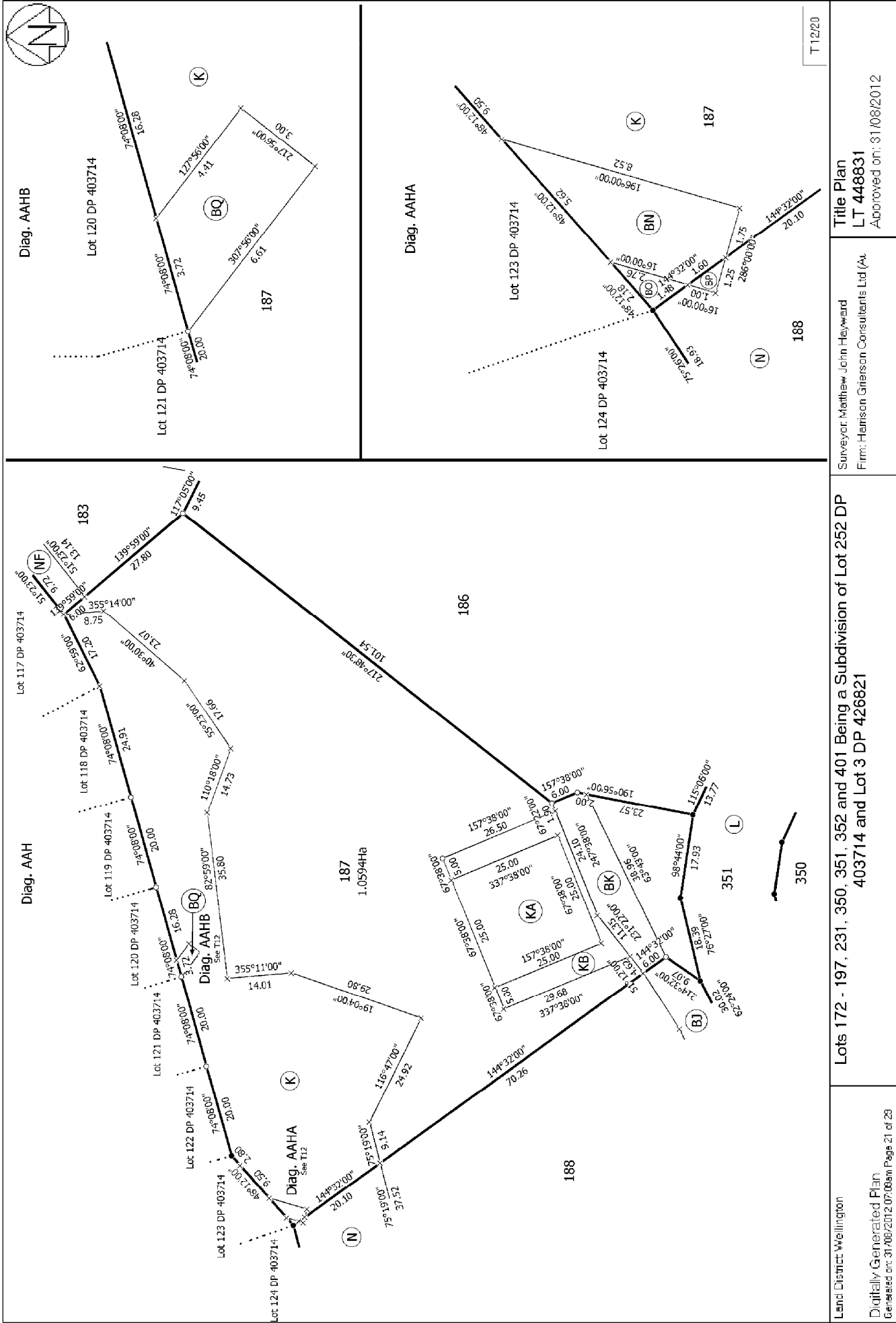
Land District: Wellington

Digitally Generated Plan
Generated on: 31/08/2012 07:08am Page 20 of 29

Lots 172 - 197, 231, 350, 351, 352 and 401 Being a Subdivision of Lot 252 DP
403714 and Lot 3 DP 426821

Surveyor: Matthew John Heyward
Firm: Harrison Grierson Consultants Ltd (A.

Title Plan
LT 448831
Approved on: 31/08/2012



Land District: Wellington

Digitally Generated Plan
Generated on: 31/08/2012 07:06am Page 21 of 29

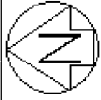
Lots 172 - 197, 231, 350, 351, 352 and 401 Being a Subdivision of Lot 252 DP
403714 and Lot 3 DP 426821

Surveyor: Matthew John Heyward
Firm: Harrison Grierson Consultants Ltd (A)

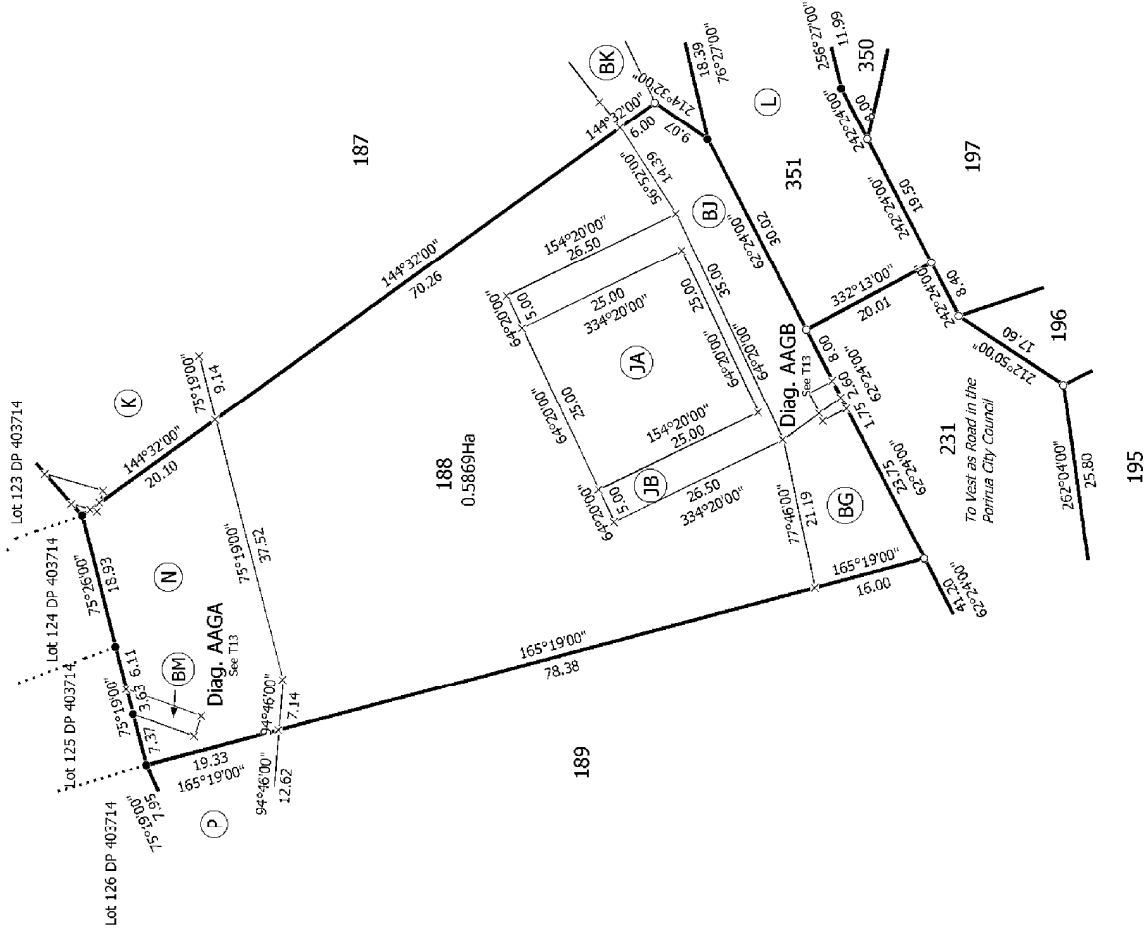
Title Plan
LT 448831

Approved on: 31/08/2012

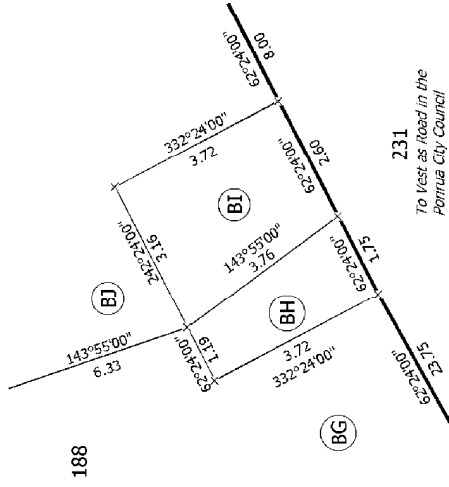
T12/20



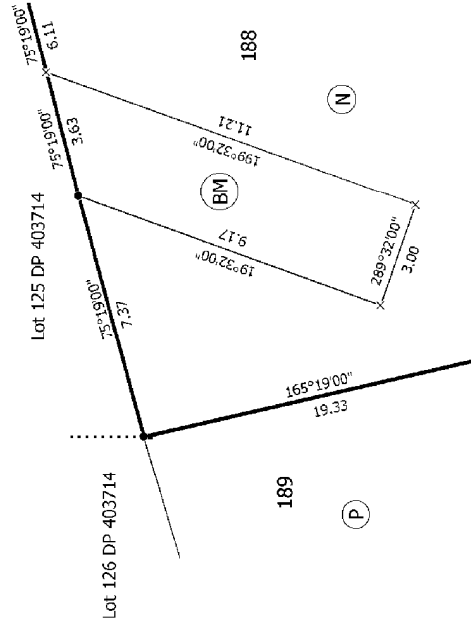
Diag. AAG



Diag. AAGB



Diag. AAGA



T1320

Land District Wellington

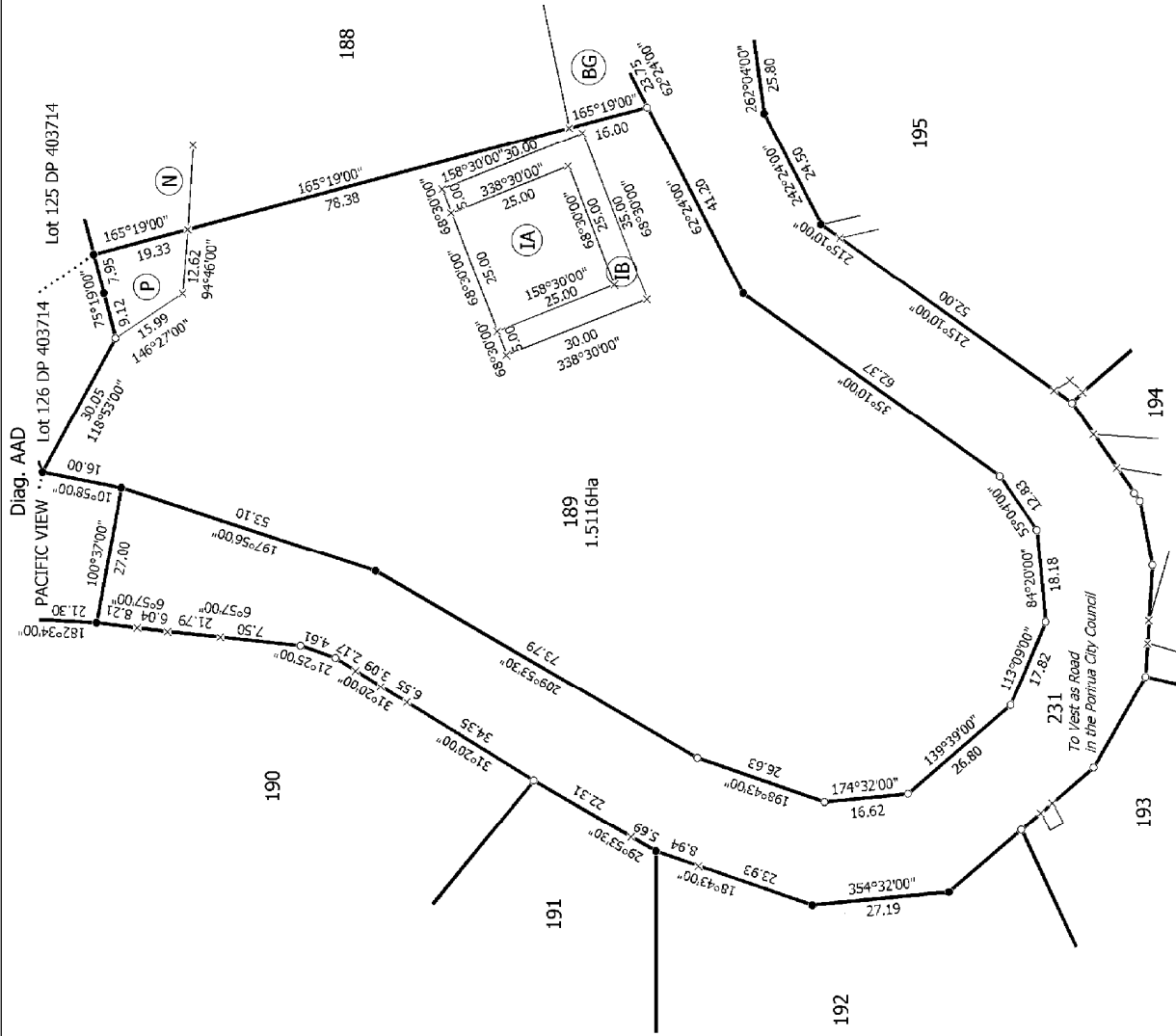
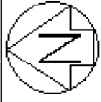
Lots 172 - 197, 231, 350, 351, 352 and 401 Being a Subdivision of Lot 252 DP 403714 and Lot 3 DP 426821

Surveyor: Matthew John Heyward
Firm: Harrison Grierson Consultants Ltd (A/C)

Title Plan
LT 448831
Approved on: 31/08/2012

Digitally Generated Plan

Generated on: 31/08/2012 07:08am Page 22 of 29



T1420

Land District: Wellington

Digitally Generated Plan

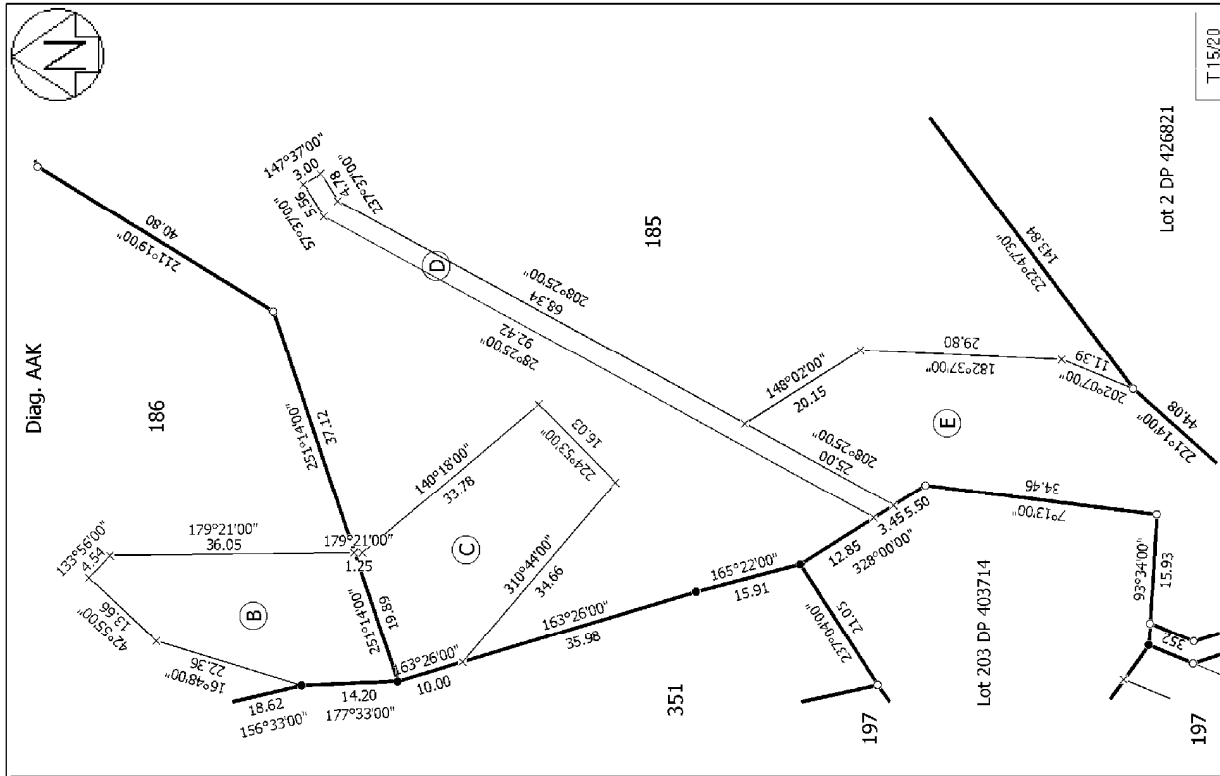
Generated on: 31/08/2012 07:08am Page 23 of 29

Lots 172 - 197, 231, 350, 351, 352 and 401 Being a Subdivision of Lot 252 DP 403714 and Lot 3 DP 426821

Surveyor: Matthew John Heyward
Firm: Harrison Grierson Consultants Ltd (Au.

Title Plan
LT 448831

Approved on: 31/08/2012



T15/20

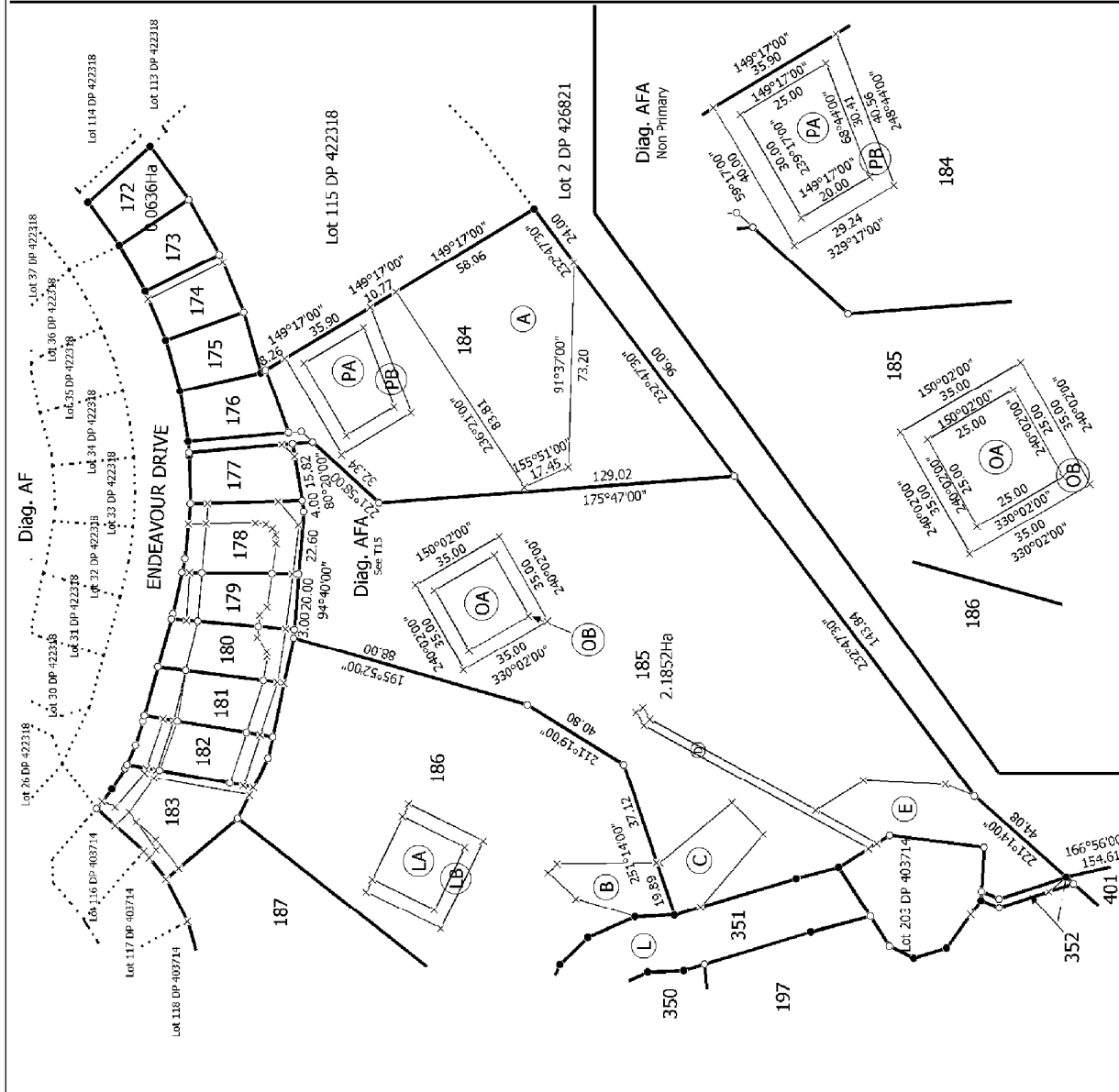
Lot 2 DP 426821

Lot 203 DP 403714

Title Plan
LT 448831

Approved on: 31/08/2012

Surveyor: Matthew John Heyward
Firm: Harrison Grierson Consultants Ltd (A.)



Diag. AF

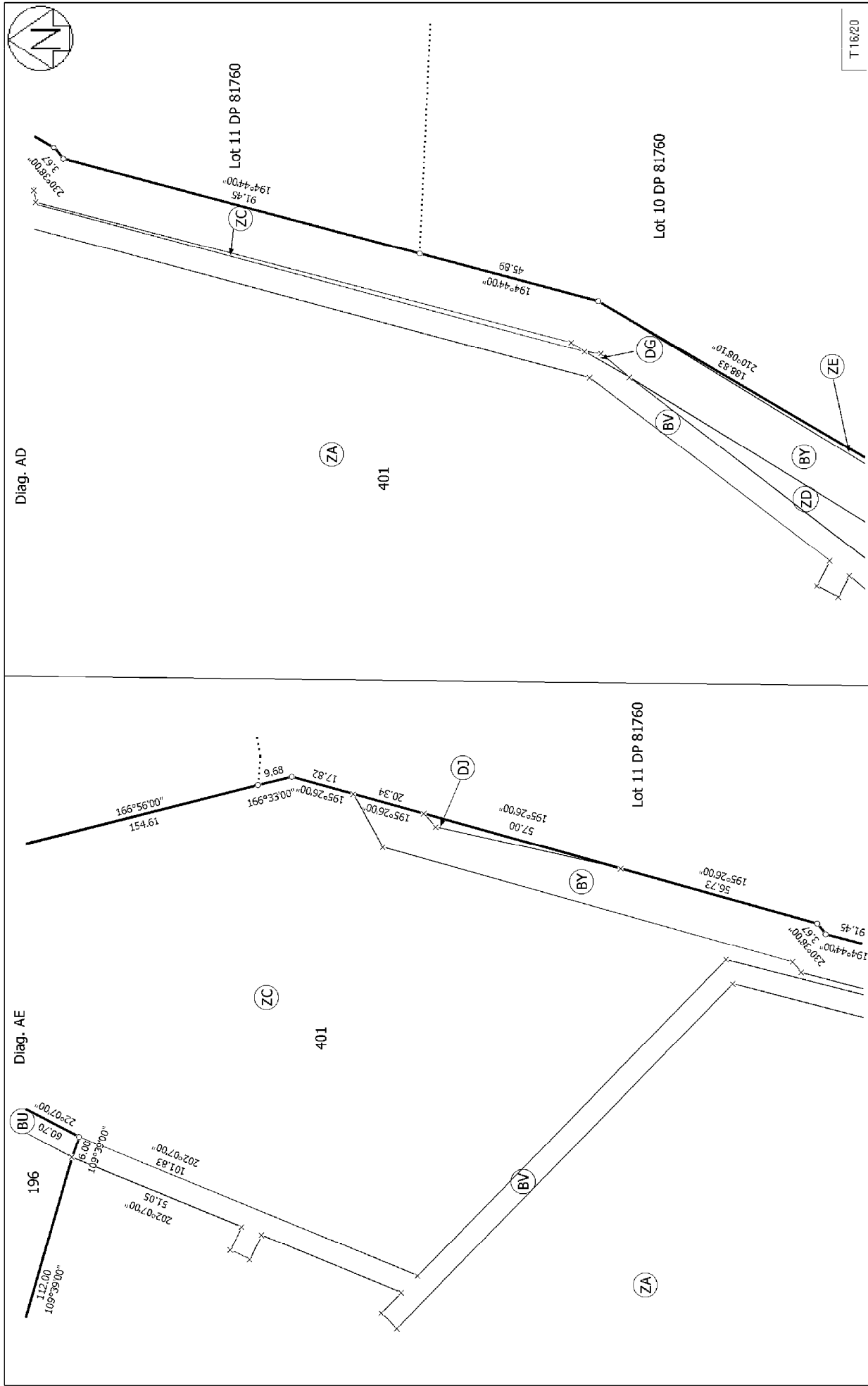
ENDEAVOUR DRIVE

Diag. AFA
Non-Primary

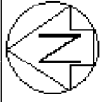
Lots 172 - 197, 231, 350, 351, 352 and 401 Being a Subdivision of Lot 252 DP 403714 and Lot 3 DP 426821

Land District: Wellington

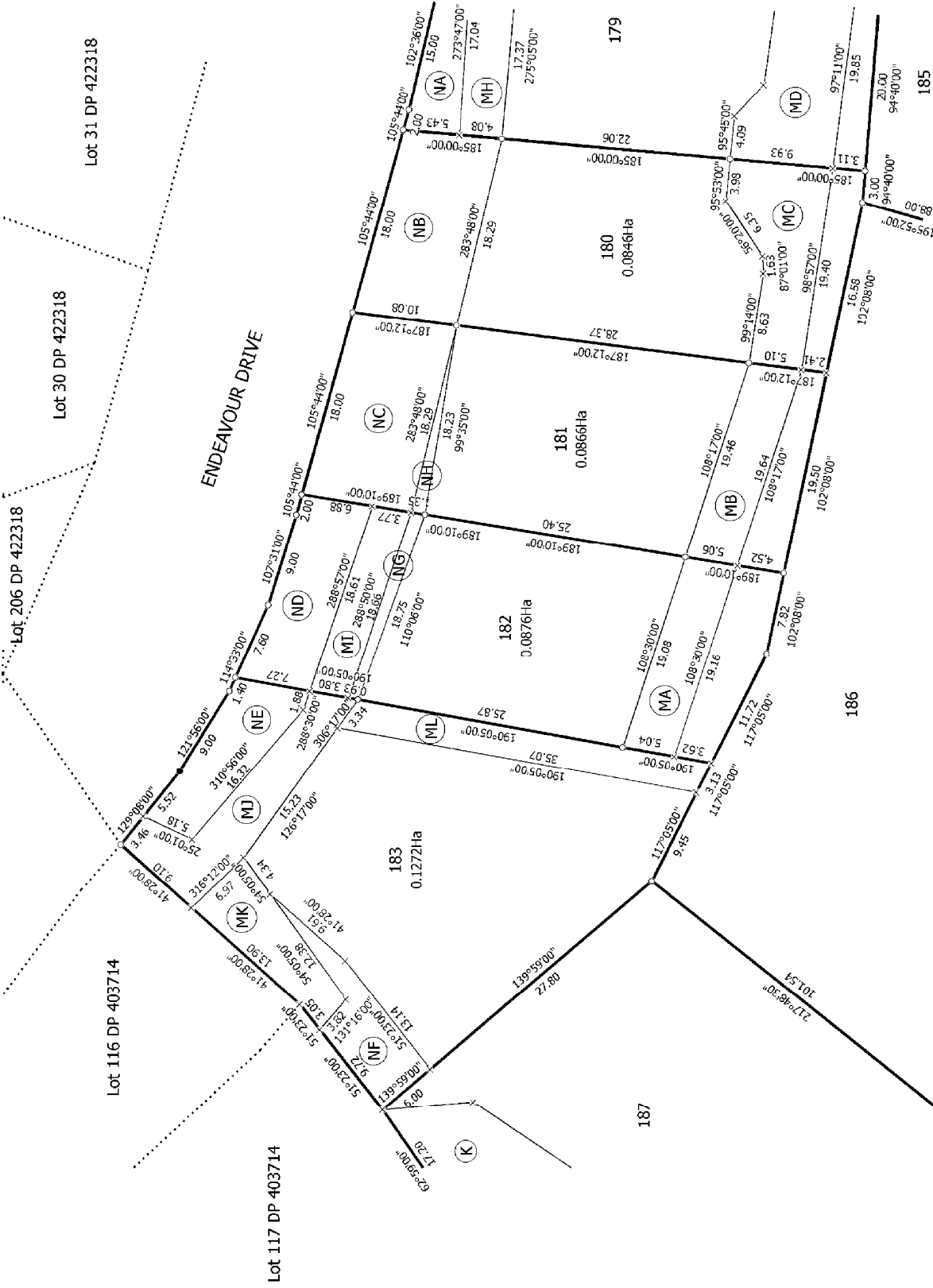
Digitally Generated Plan
Generated on: 31/08/2012 07:06am Page 24 of 29



Land District: Wellington	Lots 172 - 197, 231, 350, 351, 352 and 401 Being a Subdivision of Lot 252 DP 403714 and Lot 3 DP 426821	Title Plan LT 448831 Approved on: 31/08/2012
Digitally Generated Plan Generated on: 31/08/2012 07:00am Page 25 of 29	Surveyor: Matthew John Heyward Firm: Harrison Grierson Consultants Ltd (A.	T16/20



Diag. DA



T1820

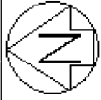
Land District: Wellington

Lots 172 - 197, 231, 350, 351, 352 and 401 Being a Subdivision of Lot 252 DP 403714 and Lot 3 DP 426821

Surveyor: Matthew John Heyward
Firm: Harrison Grierson Consultants Ltd (A.)

Title Plan
LT 448831
Approved on: 31/08/2012

Digitally Generated Plan
Generated on: 31/08/2012 07:06am Page 27 of 29



Lot 35 DP 422318

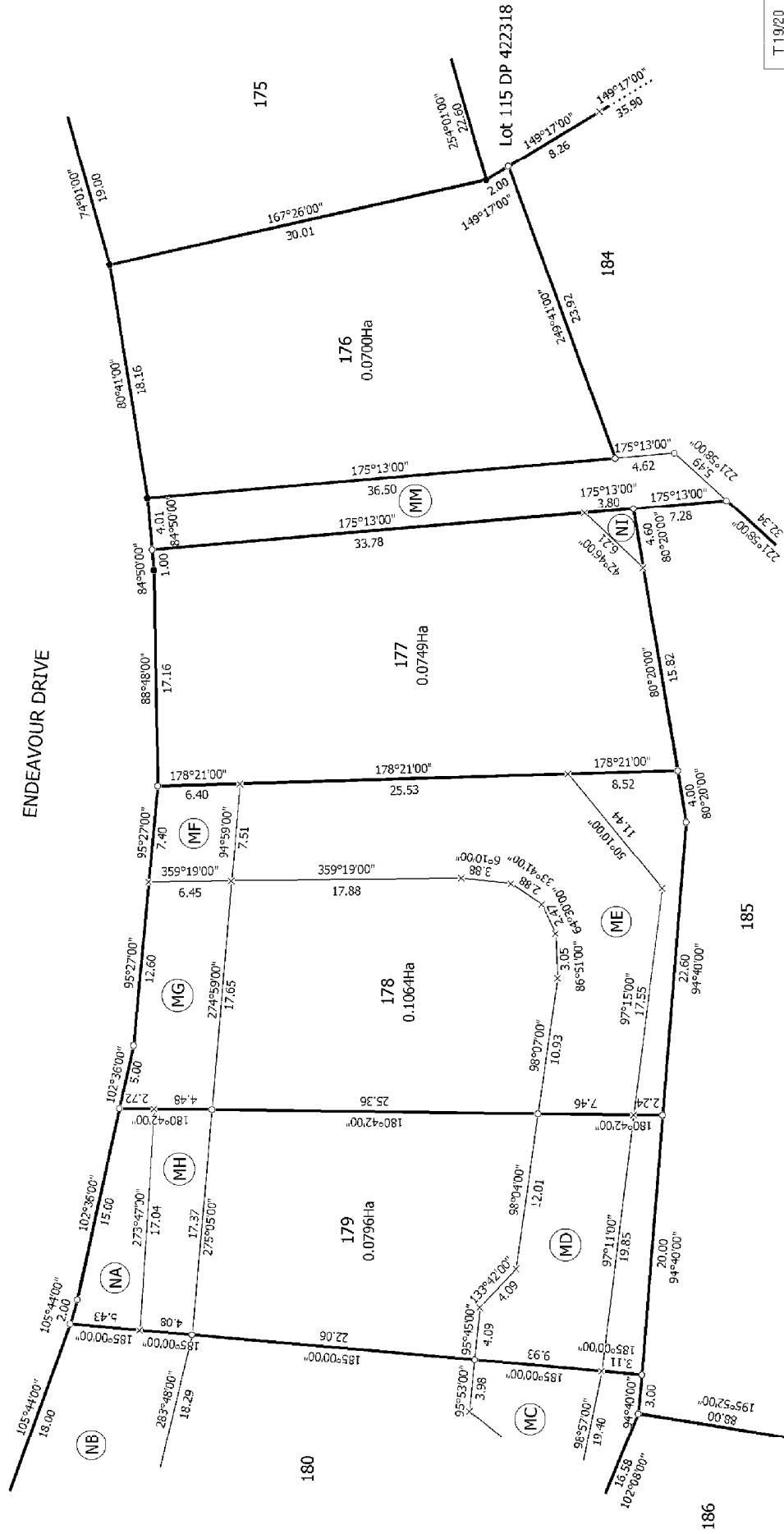
Lot 34 DP 422318

Lot 33 DP 422318

Lot 32 DP 422318

Diag. DB

ENDEAVOUR DRIVE



T19/20

Land District: Wellington

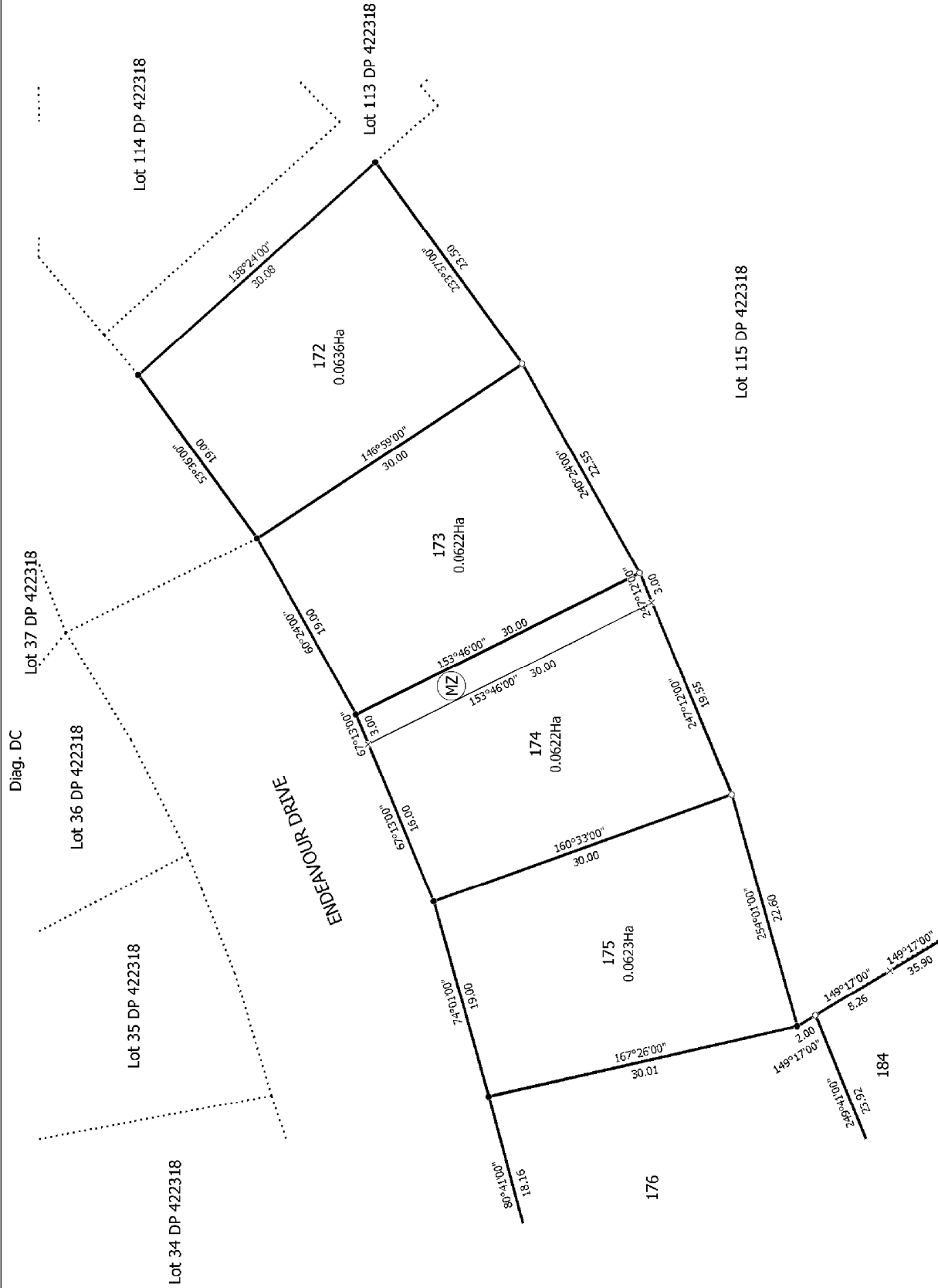
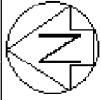
Digitally Generated Plan
Generated on: 31/08/2012 07:09am Page 28 of 29

Lots 172 - 197, 231, 350, 351, 352 and 401 Being a Subdivision of Lot 252 DP 403714 and Lot 3 DP 426821

Surveyor: Matthew John Heyward
Firm: Harrison Grierson Consultants Ltd (A.

Title Plan
LT 448831

Approved on: 31/08/2012



T 20/20

Land District: Wellington

Digitally Generated Plan

Generated on: 31/08/2012 07:08am Page 23 of 29

Lots 172 - 197, 231, 350, 351, 352 and 401 Being a Subdivision of Lot 252 DP 403714 and Lot 3 DP 426821

Surveyor: Matthew John Heyward
Firm: Harrison Grierson Consultants Ltd (Au.

Title Plan
LT 448831
Approved on: 31/08/2012