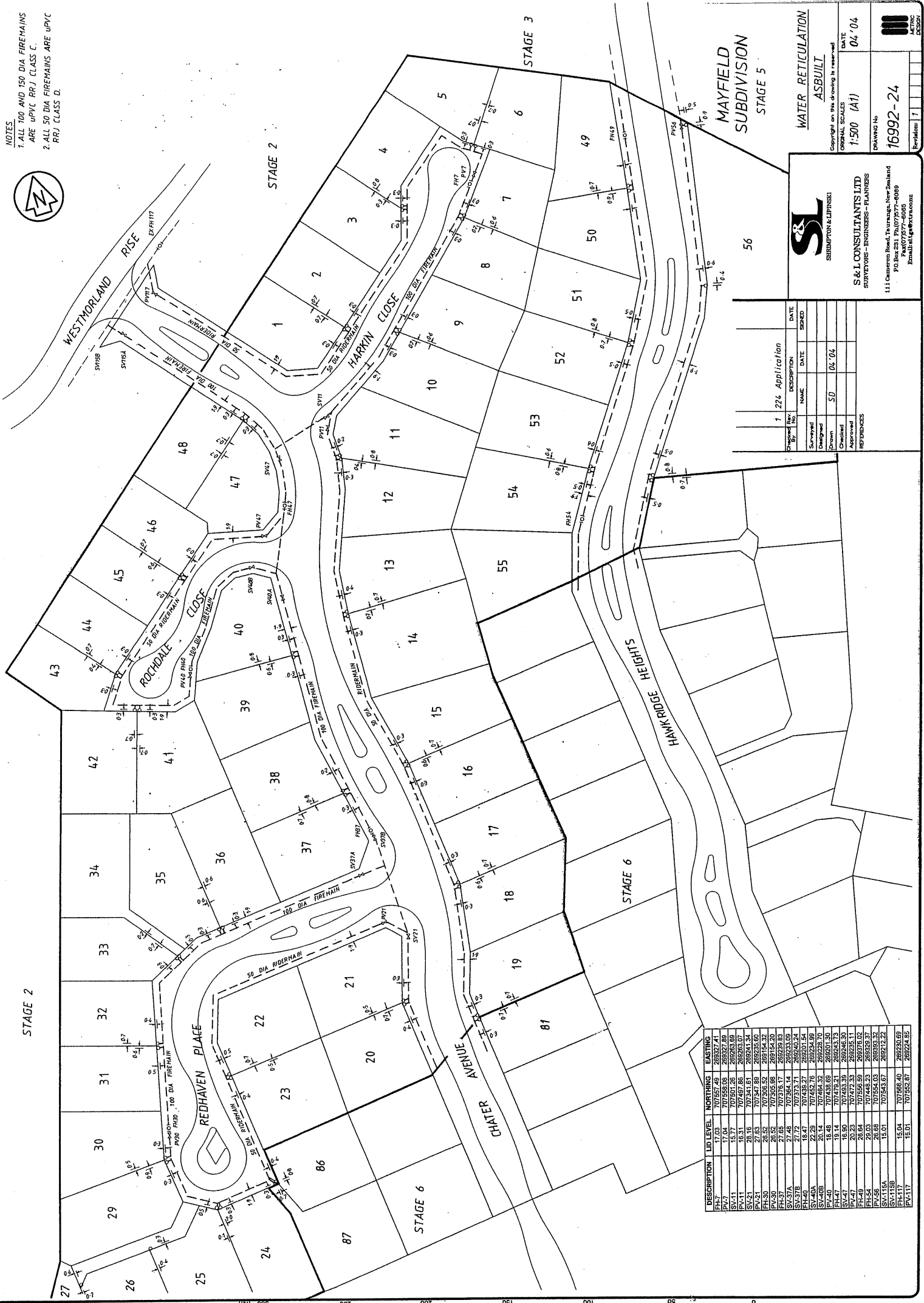


**NOTES**

- 1. ALL 100 AND 150 DIA FIRE MAINS ARE UPVC BR J CLASS C.
- 2. ALL 50 DIA FIRE MAINS ARE UPVC RRJ CLASS D.



DESCRIPTION	LID LEVEL	NORTHING	EASTING
FH7	17.03	707567.49	265327.41
SV27	17.04	707568.08	265327.89
SV41	15.77	707500.26	265353.89
SV11	16.16	707541.63	265241.34
SV21	27.63	707347.89	265335.60
FH30	26.52	707306.52	265154.32
FH37	27.85	707376.17	265238.88
SV37A	27.72	707373.74	265240.24
FH40	18.47	707439.27	265201.54
SV40A	22.29	707452.75	265234.89
SV40B	20.14	707464.32	265235.70
PV40	18.48	707438.99	265243.33
SV41	16.90	707463.39	265245.30
PV47	20.23	707472.33	265235.11
FH49	26.64	707556.89	265376.02
FH54	29.03	707448.23	265338.37
SV45A	18.81	707444.44	265242.22
SV4115B	18.81	707443.67	265242.22
FH117	15.04	707566.40	265230.69
PV117	15.01	707552.87	265224.85

Checked By	Name	Date	Signed
1	224 Application	04/04	



**S & L CONSULTANTS LTD**  
 SURVEYORS - ENGINEERS - PLANNERS  
 111 Causton Road, Tauranga, New Zealand  
 PO Box 281, Tauranga 3100  
 Email: sl@slconsultants.co.nz

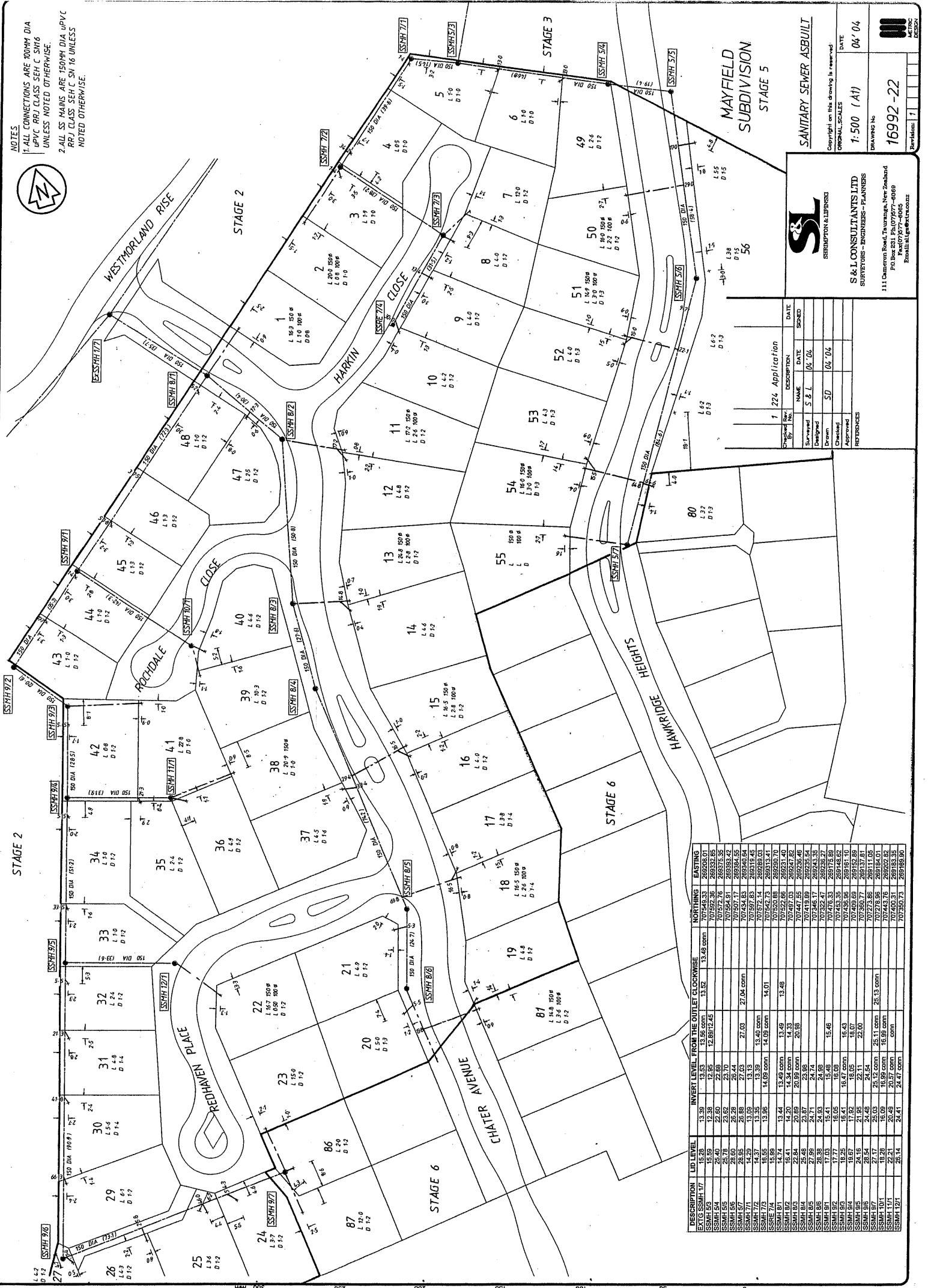
**WATER RETICULATION**  
**ASBUILT**  
 Copyright on this drawing is reserved.  
 ORIGINAL SCALES  
 1:500 (A1)  
 DATE  
 04/04  
 DRAWING No  
**16992-24**  
 Version: 1

**MAYFIELD SUBDIVISION**  
**STAGE 5**


GRAPHIC SCALE

NOTES

- 1. ALL CONNECTIONS ARE 100MM DIA UPVC RRI CLASS SEH C S106 UNLESS NOTED OTHERWISE.
- 2. ALL SS MAINS ARE 150MM DIA UPVC RRI CLASS SEH C S116 UNLESS NOTED OTHERWISE.



MAYFIELD SUBDIVISION STAGE 5



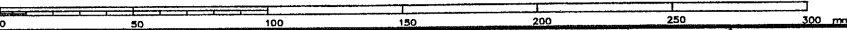
**S&L CONSULTANTS LTD**  
SURVEYORS - ENGINEERS - PLANNERS  
111 Chatterton Road, Thurston, New Zealand  
PO Box 231, P.O. 07077 - 0169  
Email: sl@sl.co.nz

Copyright in this drawing is reserved  
ORIGINAL SCALES  
DATE 04/04  
1:500 (A1)  
DRAWING NO. 16992-22  
Revised: 1

Checked By	Date	Drawn	Date

DESCRIPTION	LIN LEVEL	INVERT LEVEL FROM THE OUTLET CLOCKWISE	NORTHING	EASTING
EXTG SSMH 17	15.24	13.36	707523.33	269308.01
SSMH 5/9	15.24	13.36	707523.33	269308.01
SSMH 5/4	25.40	22.80	707572.76	268376.32
SSMH 5/5	25.78	23.70	707564.81	268593.42
SSMH 5/6	26.06	25.44	707597.17	268540.55
SSMH 5/7	26.06	25.44	707454.83	268540.54
SSMH 7/1	14.20	13.13	707572.76	268376.32
SSMH 7/2	14.37	13.39	707542.73	268313.41
SSMH 7/3	16.55	14.09	707520.88	269290.70
SSMH 7/4	15.89	13.49	707522.86	269231.40
SSMH 7/5	16.41	14.20	707487.03	269247.82
SSMH 8/1	22.84	20.89	707419.89	269248.84
SSMH 8/4	25.48	23.87	707346.17	269243.35
SSMH 8/5	27.95	24.71	707322.47	269236.27
SSMH 8/6	28.33	24.98	707476.33	269175.89
SSMH 9/1	17.77	16.05	707433.55	269148.62
SSMH 9/2	18.25	16.47	707468.89	269152.88
SSMH 9/4	19.67	17.92	707560.77	26937.81
SSMH 9/5	24.16	22.11	707273.85	26911.05
SSMH 9/6	24.48	21.54	707278.96	269184.01
SSMH 9/7	24.71	21.80	707463.16	269282.92
SSMH 10/1	18.28	16.08	707463.16	269282.92
SSMH 11/1	22.21	20.48	707520.73	269189.90
SSMH 12/1	25.14	24.47	707520.73	269189.90

GRAPHIC SCALE



DESCRIPTION	KEY	LEVEL	NORTHING	EASTING
CP-1A	15.82	70751.15	28525.21	
CP-1B	15.81	70756.20	28525.23	
CP-1C	15.81	70754.65	28525.23	
CP-1D	15.81	70754.65	28525.23	
CP-1E	15.81	70754.65	28525.23	
CP-1F	15.81	70754.65	28525.23	
CP-1G	15.81	70754.65	28525.23	
CP-1H	15.81	70754.65	28525.23	
CP-1I	15.81	70754.65	28525.23	
CP-1J	15.81	70754.65	28525.23	
CP-1K	15.81	70754.65	28525.23	
CP-1L	15.81	70754.65	28525.23	
CP-1M	15.81	70754.65	28525.23	
CP-1N	15.81	70754.65	28525.23	
CP-1O	15.81	70754.65	28525.23	
CP-1P	15.81	70754.65	28525.23	
CP-1Q	15.81	70754.65	28525.23	
CP-1R	15.81	70754.65	28525.23	
CP-1S	15.81	70754.65	28525.23	
CP-1T	15.81	70754.65	28525.23	
CP-1U	15.81	70754.65	28525.23	
CP-1V	15.81	70754.65	28525.23	
CP-1W	15.81	70754.65	28525.23	
CP-1X	15.81	70754.65	28525.23	
CP-1Y	15.81	70754.65	28525.23	
CP-1Z	15.81	70754.65	28525.23	

DESCRIPTION	LD LEVEL	INVERT LEVEL FROM THE OUTLET CLOSURE	NORTHING	EASTING
CP-1A	14.82	117.9	131.0	13.33
CP-1B	14.82	117.9	131.0	13.33
CP-1C	14.82	117.9	131.0	13.33
CP-1D	14.82	117.9	131.0	13.33
CP-1E	14.82	117.9	131.0	13.33
CP-1F	14.82	117.9	131.0	13.33
CP-1G	14.82	117.9	131.0	13.33
CP-1H	14.82	117.9	131.0	13.33
CP-1I	14.82	117.9	131.0	13.33
CP-1J	14.82	117.9	131.0	13.33
CP-1K	14.82	117.9	131.0	13.33
CP-1L	14.82	117.9	131.0	13.33
CP-1M	14.82	117.9	131.0	13.33
CP-1N	14.82	117.9	131.0	13.33
CP-1O	14.82	117.9	131.0	13.33
CP-1P	14.82	117.9	131.0	13.33
CP-1Q	14.82	117.9	131.0	13.33
CP-1R	14.82	117.9	131.0	13.33
CP-1S	14.82	117.9	131.0	13.33
CP-1T	14.82	117.9	131.0	13.33
CP-1U	14.82	117.9	131.0	13.33
CP-1V	14.82	117.9	131.0	13.33
CP-1W	14.82	117.9	131.0	13.33
CP-1X	14.82	117.9	131.0	13.33
CP-1Y	14.82	117.9	131.0	13.33
CP-1Z	14.82	117.9	131.0	13.33

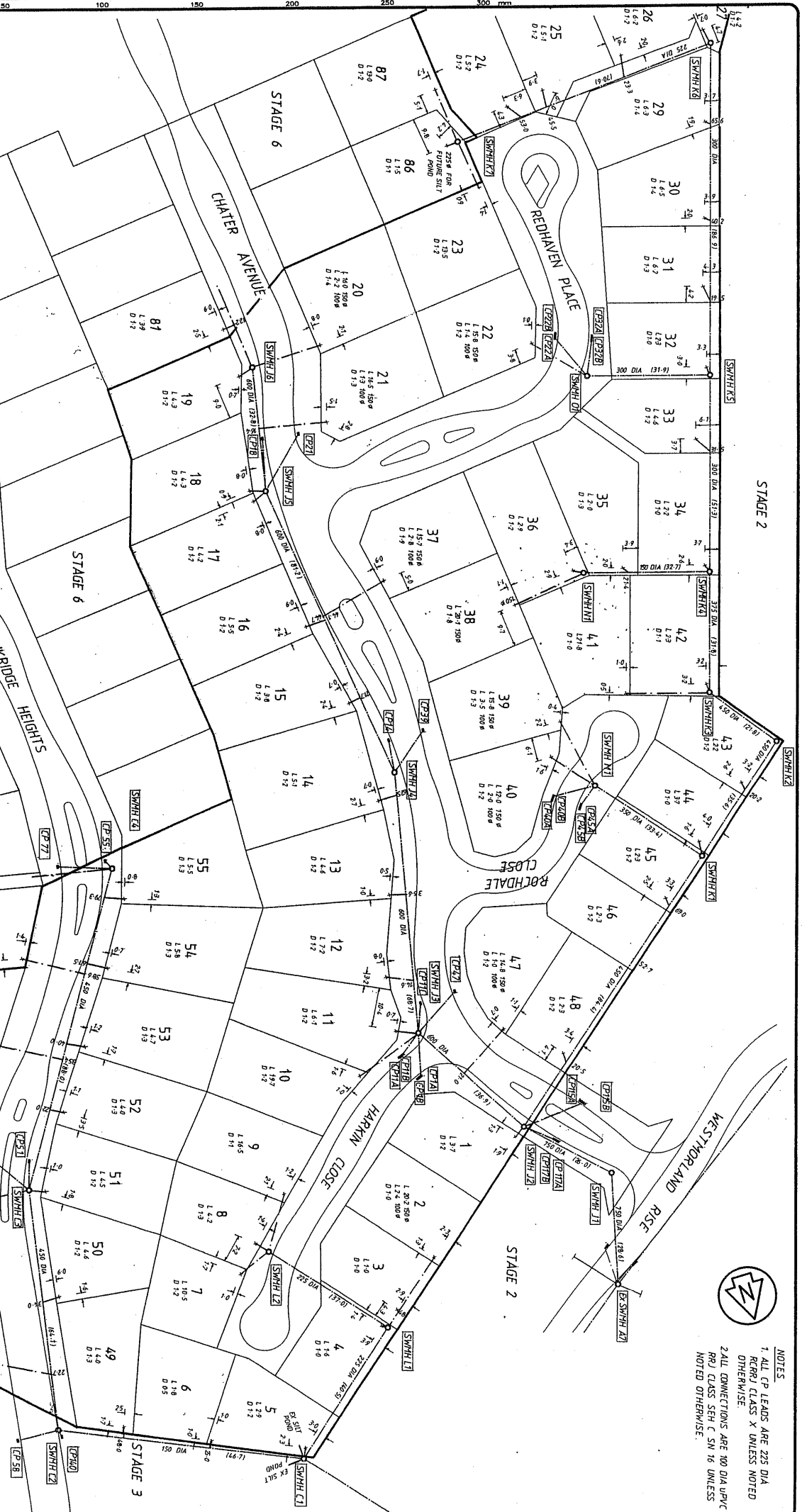
Checked By	DATE	DESCRIPTION
SD	04/04	1 224 Application

Checked By	DATE	DESCRIPTION
SD	04/04	1 224 Application

111 Corporate Park, Irvington, New York  
 S&L CONSULTANTS LTD  
 SURVEYORS - ENGINEERS - PLANNERS  
 E-mail: info@sandl.com

**S&L CONSULTANTS LTD**  
 SURVEYORS - ENGINEERS - PLANNERS

Copyright on this drawing is reserved.  
 GENERAL SCALE  
 1:500 (A11)  
 DATE 04/04  
 DRAWING NO. 15992-23  
 SHEET NO. 1



NOTES  
 1. ALL CP LEADS ARE 225 DIA RCR(R) CLASS X UNLESS NOTED OTHERWISE  
 2. ALL CONNECTIONS ARE 100 DIA-APVC NOTED OTHERWISE.