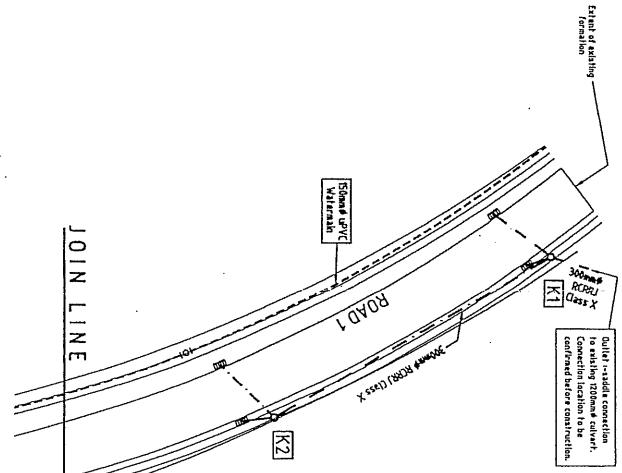


Manhole	E	LI	MM	MC
A6	8/25	7/23	7/19	24/01/17/16
A7	6/25	7/18	7/19	24/01/17/16
A8	7/25	7/13	7/19	24/01/17/16
A9	7/25	7/13	7/19	24/01/17/16
A10	7/25	7/13	7/19	24/01/17/16
A11	7/25	7/13	7/19	24/01/17/16
A12	7/25	7/13	7/19	24/01/17/16
A13	7/25	7/13	7/19	24/01/17/16
A14	7/25	7/13	7/19	24/01/17/16
A15	7/25	7/13	7/19	24/01/17/16
A16	7/25	7/13	7/19	24/01/17/16
A17	7/25	7/13	7/19	24/01/17/16
A18	7/25	7/13	7/19	24/01/17/16
A19	7/25	7/13	7/19	24/01/17/16
A20	7/25	7/13	7/19	24/01/17/16
A21	7/25	7/13	7/19	24/01/17/16
A22	7/25	7/13	7/19	24/01/17/16
A23	7/25	7/13	7/19	24/01/17/16
A24	7/25	7/13	7/19	24/01/17/16
A25	7/25	7/13	7/19	24/01/17/16
A26	7/25	7/13	7/19	24/01/17/16
A27	7/25	7/13	7/19	24/01/17/16
A28	7/25	7/13	7/19	24/01/17/16
A29	7/25	7/13	7/19	24/01/17/16
A30	7/25	7/13	7/19	24/01/17/16
A31	7/25	7/13	7/19	24/01/17/16
A32	7/25	7/13	7/19	24/01/17/16

Manhole	E	LI	MM	MC
V1	8/21	7/17	7/13	24/01/17/16
V2	8/21	7/17	7/13	24/01/17/16
V3	8/21	7/17	7/13	24/01/17/16
V4	8/21	7/17	7/13	24/01/17/16
V5	8/21	7/17	7/13	24/01/17/16
V6	8/21	7/17	7/13	24/01/17/16
V7	8/21	7/17	7/13	24/01/17/16
V8	8/21	7/17	7/13	24/01/17/16
V9	8/21	7/17	7/13	24/01/17/16
V10	8/21	7/17	7/13	24/01/17/16
V11	8/21	7/17	7/13	24/01/17/16
V12	8/21	7/17	7/13	24/01/17/16
V13	8/21	7/17	7/13	24/01/17/16
V14	8/21	7/17	7/13	24/01/17/16
V15	8/21	7/17	7/13	24/01/17/16
V16	8/21	7/17	7/13	24/01/17/16
V17	8/21	7/17	7/13	24/01/17/16
V18	8/21	7/17	7/13	24/01/17/16
V19	8/21	7/17	7/13	24/01/17/16
V20	8/21	7/17	7/13	24/01/17/16
V21	8/21	7/17	7/13	24/01/17/16
V22	8/21	7/17	7/13	24/01/17/16
V23	8/21	7/17	7/13	24/01/17/16
V24	8/21	7/17	7/13	24/01/17/16
V25	8/21	7/17	7/13	24/01/17/16
V26	8/21	7/17	7/13	24/01/17/16
V27	8/21	7/17	7/13	24/01/17/16
V28	8/21	7/17	7/13	24/01/17/16
V29	8/21	7/17	7/13	24/01/17/16
V30	8/21	7/17	7/13	24/01/17/16
V31	8/21	7/17	7/13	24/01/17/16
V32	8/21	7/17	7/13	24/01/17/16

- GENERAL NOTES:**
- All sewer pipes are 150mm dia PVC SEH 'C' sewer grade unless noted otherwise.
 - All stormwater pipes are 150mm dia PVC SEH 'C'.
 - All sewer and stormwater house connections to be 100mm dia PVC SEH 'C' laid at 1000 grade unless otherwise indicated.
 - All stormwater manholes to be constructed in accordance with drawings 7073-70.
 - All stormwater manholes to be constructed in accordance with drawings 7073-70.
 - All sumps to be recessed type and to be constructed in accordance with drawings 7073-70.
 - Leaders to single cesspits to be 225mm dia RCRRJ Class 2 laid at 5000 grade unless otherwise noted.
 - Leaders to double cesspits to be 300mm dia RCRRJ Class 2 laid at 1100 grade unless otherwise noted.
 - Refer to drawings 7073-50 & 51 for road layout details.
 - Manholes shall be indicated and are dependent on drawings 7073-50 & 51.
 - All stormwater pipes to be 225mm dia RCRRJ Class 2 laid at 5000 grade unless otherwise noted.
 - All stormwater pipes to be 150mm dia PVC SEH 'C' pipes.
 - Connections to each lot to be 225mm dia RCRRJ Class 2 laid at 5000 grade unless otherwise noted.
 - All manhole, hydrants and tees to have suitable anchor bolts installed.
 - All riser connections to manholes are to be brass fittings.
 - All 100/50 reducers are to be constructed as per TOC standard connections detail drawing 7073-71.



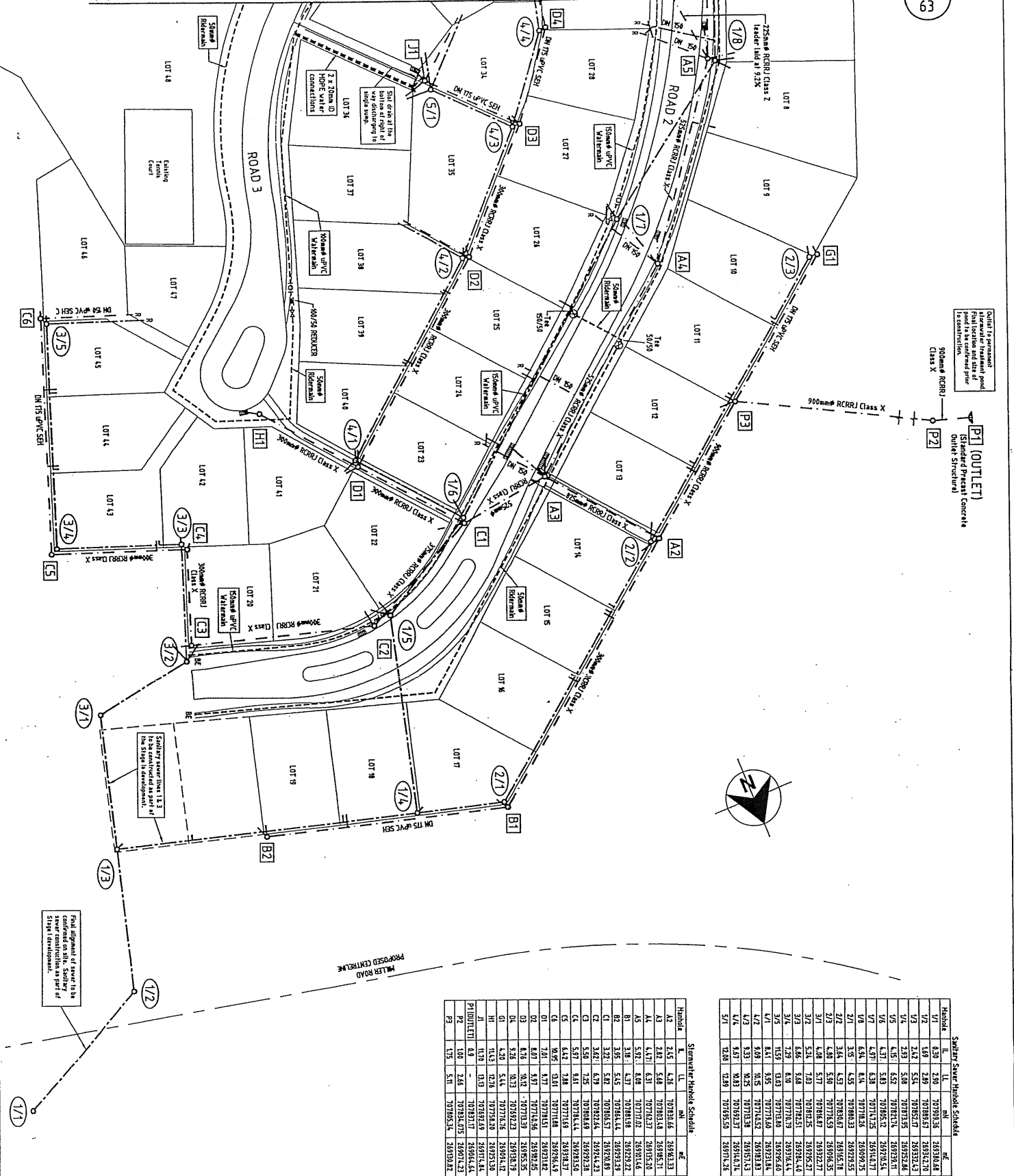
LEGEND

(1/2)	Sanitary Sewer Handbook Label
(A1)	Stormwater Handbook Label
--- (dashed line)	High Stormwater
--- (dashed line)	Low Stormwater
--- (dashed line)	Stormwater Outlet
--- (dashed line)	Stormwater Handbook
--- (dashed line)	Stormwater
--- (dashed line)	Double Cesspit
--- (dashed line)	Single Cesspit
--- (dashed line)	Stake Value
--- (dashed line)	Gull Valve
--- (dashed line)	Fire Hydrant
--- (dashed line)	Man Valve
--- (dashed line)	Blank End
--- (dashed line)	Reducer Stormwater & Sanitary Sewer
--- (dashed line)	Reducing Fm (SW & SS)
--- (dashed line)	BE
--- (dashed line)	RE
--- (dashed line)	IO

Project	Residential Development - STAGE ONE North Bethlehem, Tauranga	
Client	MAYFIELD LIMITED	
Design Title	SANITARY SEWER, STORMWATER & WATER LAYOUT PLAN SHEET 1 OF 2	
Drawn	Checked	Date
Approved	Approved	Date
Scale	Scale	Date
Drawn By: [Signature]	Checked By: [Signature]	Date: [Date]
Approved By: [Signature]	Approved By: [Signature]	Date: [Date]
Scale: 1:500 - A1	Scale: 1:500 - A1	Date: [Date]
Drawn No: 63	Revision No: 01	Date: [Date]

Cornell Wagner
Engineering & Architecture
141 Tauranga Central Drive, Tauranga
Tauranga, New Zealand
Phone: +64 7 376 4100
Fax: +64 7 376 4101
Email: info@cornellwagner.co.nz

JOIN LINE



Outlet to permanent Final location and size of pond to be confirmed prior to construction.

P1 (OUTLET)
Standard Precast Concrete
Outlet Structure

900mm^Ø RCRRI Class X



Sanitary Sewer Manhole Schedule

Manhole	IL	LL	HL	HL	HL
V1	0.39	2.90	70790.56	70790.64	70790.68
V2	0.99	2.99	70789.57	70794.21	70794.21
V3	2.42	5.24	70785.07	70792.43	70792.43
V4	2.99	3.08	70793.55	70792.88	70792.88
V5	4.95	5.92	70782.15	70792.88	70792.88
V6	4.31	3.89	70795.32	70792.88	70792.88
V7	4.81	8.28	70788.42	70792.88	70792.88
V8	3.82	4.32	70790.33	70792.88	70792.88
V9	4.49	5.50	70794.59	70795.61	70795.61
V10	4.08	5.77	70786.67	70792.77	70792.77
V11	5.24	7.03	70782.25	70792.57	70792.57
V12	4.86	5.68	70782.51	70792.44	70792.44
V13	7.29	8.10	70770.79	70792.64	70792.64
V14	11.59	8.49	70778.80	70792.56	70792.56
V15	8.41	9.35	70778.60	70792.84	70792.84
V16	4.72	6.05	70784.52	70792.88	70792.88
V17	6.03	8.25	70781.38	70792.73	70792.73
V18	4.97	8.43	70792.37	70794.04	70794.04
V19	12.08	12.89	70785.50	70797.26	70797.26

Stormwater Manhole Schedule

Manhole	IL	LL	HL	HL	HL
A2	2.15	4.16	70783.66	70788.13	70788.13
A3	2.88	5.68	70783.18	70788.51	70788.51
A4	4.71	6.31	70782.37	70789.50	70789.50
A5	5.92	8.08	70777.02	70789.64	70789.64
A6	3.85	5.15	70781.98	70792.22	70792.22
A7	3.22	5.82	70786.44	70792.39	70792.39
A8	3.62	6.79	70786.44	70792.43	70792.43
A9	5.97	7.25	70788.69	70792.23	70792.23
A10	6.42	8.81	70787.84	70792.33	70792.33
A11	6.42	7.88	70777.03	70792.37	70792.37
A12	8.05	9.81	70771.09	70792.84	70792.84
A13	1.01	4.17	70781.98	70792.32	70792.32
A14	8.02	9.71	70783.26	70792.82	70792.82
A15	8.18	8.72	70782.92	70792.92	70792.92
A16	2.98	8.13	70777.02	70789.64	70789.64
A17	4.12	8.24	70782.00	70792.88	70792.88
A18	4.12	8.24	70782.00	70792.88	70792.88
B1	11.39	13.19	70782.69	70795.64	70795.64
B2	10.6	12.66	70782.05	70794.23	70794.23
B3	17.5	17.01	70785.31	70798.82	70798.82

- GENERAL NOTES**
- All sewer pipes DN 150 dia PVC SHT 'C' sewer grade unless noted otherwise.
 - All stormwater pipes 180mm dia PVC SHT 'C'.
 - All sewer and stormwater house connections to be DN 100 dia PVC SHT 'C' laid at 7000 grade unless shown otherwise.
 - All sewer manholes to be constructed in accordance with drawings 7073-10.
 - All stormwater manholes to be constructed in accordance with drawings 7073-20.
 - All pipes to be installed as per drawings 7073-10 in accordance with drawing 7073-10.
 - Leaders to single cesspits to be 25mm dia RCRRI Class 2 laid at 1000 grade unless otherwise noted.
 - Leaders to double cesspits to be 30mm dia RCRRI Class 2 laid at 1000 grade unless otherwise noted.
 - Refer to drawings 7073-56 & 57 for overhead road details.
 - Manhole lid levels indicative and are dependent on finished final form.
 - All watermain pipes to be 2-pipe 180mm Class C pipe.
 - All stormwater pipes to be 30mm DN PVC Class 0 or 2mm.
 - Condition of pipe lot to be 20mm DN PIPE 16 bar pipe.
 - All bends, hydrants and tees to have suitable anchors.
 - All cleanouts connections to watermain are to be brass fittings.
 - All 100/50 reducers are to be constructed as per TOC Standard connections detail drawing 7073-7L.

LEGEND

- Sanitary Sewer Manhole Label **(A1)**
- Stormwater Manhole Label **(B1)**
- New Sanitary Sewer
- New Stormwater
- Stormwater Outlet
- Sewer Manhole
- Stormwater Manhole
- Double Cesspit
- Single Cesspit
- Slide Valve
- Watermain Reducer
- Gate Valve
- Fire Hydrant
- New Water
- Blank End
- Reducer (Sanitary to Sanitary Sewer)
- Reading Eye (SW & SS)

Cornell Wagner
 468 St. Albans
 Toronto, Ont. M6K 3R5
 Telephone: 416-797-8100
 Fax: 416-797-8101
 Email: info@cornellwagner.com
 Website: www.cornellwagner.com

MAYFIELD LIMITED
 Residential Development - STAGE ONE
 North Bethlehem, Tauranga

SANITARY SEWER, STORMWATER & WATER LAYOUT PLAN
 SHEET 2 OF 2

Project: **Mayfield**

Client: **MAYFIELD LIMITED**

Prepared by: **DL**

Checked by: **DL**

Drawn by: **DL**

Revised by: **DL**

Scale: 1:500

Revision: 01

Revision: 01

Rev. No.	Date	By	Ver.	App.
01	15/03/2024	DL	1	DL

Drawn by: **DL**

Checked by: **DL**

Scale: 1:500

Revision: 01